

IRBP K

Positioner Range



This positioner is for applications requiring two stations – loading/unloading and welding – and where the workpiece has to be rotated about one axis.

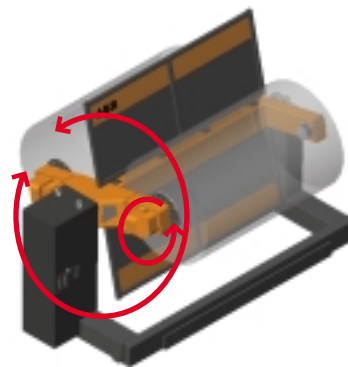
The rotation is fully coordinated with the robot to ensure high quality and maximum welding speed.

The IRBP K is suitable for fixtures and workpieces up to 4 000mm (models 500K and 750K).

Dynamic control of the rotating workpiece permits rapid acceleration and high speed movements to reduce welding times and to meet tough reorientation requirements.

Dynamically adaptive software plus the simultaneous operation of the high speed drives give quick changeovers and further reduce cycle times.

The arrangement allows the operator to perform all loading and unloading operations ergonomically. Also, the operator is shielded from the welding process.



IRBP K

Positioner Range

General Features

All ABB positioners gives users a complete and efficient solution. They are of a robust construction to ensure excellent stability.

All axes are fully coordinated with the robot when programming as well as during operation. The positioners are easy to use with clear, simple instructions for programming.

They use the same drive systems and software as the robot. The dynamic software (HPP, High Performance Positioner) automatically compensates for the effects of gravity, inertia and friction to provide fast movements and accurate following of the programmed path. The robot software, Load Id, is used for calculating. The positioners are used for manipulating workpieces during arc welding, thermal cutting or other applications.

To meet users' requirements they can be supplied (or retrofitted) with a comprehensive range of hydraulic or pneumatic swivels and slip-ring drives (24 channels using ProfiBus, DeviceNet, InterBus etc).

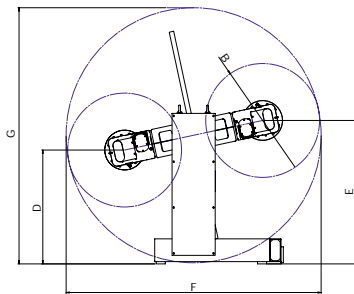
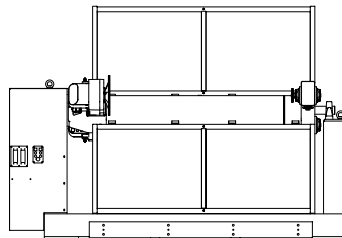
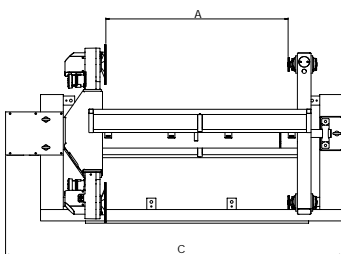
ABB's positioners are designed to be highly functional

yet compact thus making maximum use of available floor space.

Standardised dimensions for all rotating plates greatly simplifies exchanging fixtures.

ABB positioners can be supplied with all necessary safety equipment. Users can get their positioner really soon as all ABB positioners comes with a very short delivery time.

		250K	500K	750K
Handling capacity	kg	250	500	750
Cont. torque	Nm	350	650	900
Max inertia	kgm ²	40	150	300
Max bending torque	Nm	650	3300	5000
Max speed	rpm	30	25	25
Min interchange time	s	3.2	3.3	3.3
Max interchange time	s	3.9	4.5	4.6
Repeatability	mm	0.1	0.1	0.1
Max load diff ø 1000	kg	140	300	250
Max load diff ø 1200	kg	120	250	220
Max load diff ø 1400	kg		220	200



Positioner 500K/750K

A	B Ø	C	D	E	F	G
1600	1000	3410	1000	1340	2320	2330
2000	1000	3810	1000	1340	2320	2330
2500	1000	4310	1000	1340	2320	2330
3150	1000	4960	1000	1340	2320	2330
3500	1000	5310	1000	1340	2320	2330
4000	1000	5810	1000	1340	2320	2330
1600	1200	3410	1000	1740	2720	2730
2000	1200	3810	1000	1740	2720	2730
2500	1200	4310	1000	1740	2720	2730
3150	1200	4960	1000	1740	2720	2730
3500	1200	5310	1000	1740	2720	2730
4000	1200	5810	1000	1740	2720	2730
1600	1400	3410	1000	2140	3120	3130
2000	1400	3810	1000	2140	3120	3130
2500	1400	4310	1000	2140	3120	3130
3150	1400	4960	1000	2140	3120	3130
3500	1400	5310	1000	2140	3120	3130
4000	1400	5810	1000	2140	3120	3130

Positioner 250K

A	B Ø	C	D	E	F	G
1600	1000	2960	1000	1260	2240	2250
2000	1000	3360	1000	1260	2240	2250
2500	1000	3860	1000	1260	2240	2250
3150	1000	4510	1000	1260	2240	2250
3500	1000	4860	1000	1260	2240	2250
4000	1000	5360	1000	1260	2240	2250
1600	1200	2960	1000	1660	2640	2650
2000	1200	3360	1000	1660	2640	2650
2500	1200	3860	1000	1660	2640	2650
3150	1200	4510	1000	1660	2640	2650
3500	1200	4860	1000	1660	2640	2650
4000	1200	5360	1000	1660	2640	2650

www.abb.com/robotics

ABB reserves the right to change specifications without notice.

SE-695 82 Laxå Sweden, Tel +46 584 820 00, Fax +46 584 131 80

