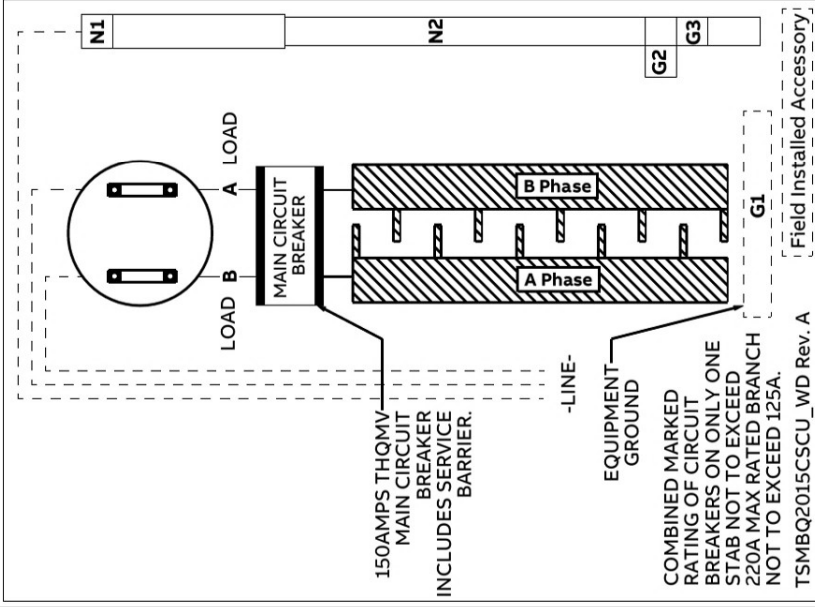




ReliaHome™
Meter Combo

ENCLOSED
PANELBOARD
C3024



CAT NO. : TSMBQ2015CSCU MOD 1
SURFACE MOUNT

150 AMPS MAX 120/240V AC 208Y/120V AC
3 WIRE, 1 PHASE
TYPE 3R ENCLOSURE
METER SOCKET RATING: 200 AMPS CONTINUOUS

MAIN BREAKER: THQMV150E

USE ONLY ABB TYPE BREAKERS:

THQL, THHQL, THQLT, THQLQ, THQL-GFCI, THHQL-GFCI & THQL-AF OR THHQL-AF BREAKERS.

OVER CURRENT PROTECTION

IF BREAKER TRIPS, HANDLE WILL BE IN INTERMEDIATE POSITION. TO RESTORE SERVICE; 1. MOVE HANDLE TO "OFF" POSITION. 2. THEN TO "ON" POSITION.

USE COPPER OR ALUMINIUM

USE ONLY 60 DEG. C (140 DEG. F) OR 75 DEG. C (167 DEG. F) CONDUCTORS ON ALL FIELD INSTALLED LINE, LOAD AND NEUTRAL TERMINATIONS.

WIRE RANGE TABLE

CONNECTOR	COPPER		ALUMINIUM	
	SOLID	STRD	SOLID	STRD
LINE - METER SOCKET		2/0-150A to 350MCM		2/0-150A to 350MCM
LOAD A & B		1-300		2/0-300
NEUTRAL - N1		6-350		6-350
NEUTRAL - N2		14-4		12-4
GROUND - G1		14-4		14-4
GROUND - G2		2/0-6		2/0-6
Ground - G3		2/0-6		2/0-6

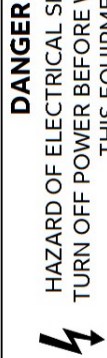
LUG TIGHTENING TORQUE (LB-IN)

SLOTTED SCREW		INTERNAL HEX	
AWG WIRE	TORQUE (LB-IN)	HEX SIZE	TORQUE (LB-IN)
14 - 10	32 - 35	3/16 ACROSS FLATS	108 - 120
8	36 - 40	1/4 ACROSS FLATS	180 - 200
6 - 4	41 - 45	5/16 ACROSS FLATS	248 - 275
3 - 2/0	45 - 50		

ACCESSORIES

EQUIPMENT GROUND KITS	TGK12
FRONT FILLER PLATES	1/2" Width -TFH,1" width - TQLFP1
SUB-FEED LUG KITS	THLK2150

WARNING: TO AVOID ACCIDENTAL CONTACT WITH LIVE PARTS, CLOSE ALL OPENINGS WITH BREAKERS OR FILLER PLATES. THE CIRCUIT BREAKERS IN THIS BOX HAVE BEEN SELECTED TO PROTECT THE WIRING TO AVOID DAMAGE AND LOSS OF PROTECTION, DO NOT REPLACE WITH HIGHER AMPERE RATED BREAKERS. FOR REPAIRS OR ALTERATIONS, CALL AN ELECTRICAL CONTRACTOR OR ELECTRICIAN.



DANGER

HAZARD OF ELECTRICAL SHOCK OR BURN.
TURN OFF POWER BEFORE WORKING INSIDE THIS EQUIPMENT.

RAINPROOF CONDUIT HUBS

WHEN CABINET HAS PROVISIONS FOR A CONDUIT HUB, SELECT FROM THE CHART BELOW

CONDUIT DIAMETER INCHES	CAP	3/4	1	1 1/4	1 1/2	2	2 1/2	3	BUSHING PLATE
RAINTIGHT HUB CAT.NO.	TCCP	TC75	TC100	TC125	TC150	TC200	TC250	TC300	TCCP15 TCCP20

SHORT CIRCUIT CURRENT RATING OF THIS ENCLOSED PANELBOARD IS 22,000 RMS SYMMETRICAL AMPERES, 240 VOLTS AC MAX. THE BREAKER SHALL HAVE MINIMUM INTERRUPTING RATING OF 22,000 AMP RMS. ADDITIONAL OR REPLACEMENT CIRCUIT BREAKERS SHALL BE OF THE SAME MANUFACTURER AND TYPE DESIGNATION AND SHALL HAVE AN EQUAL OR GREATER SHORT CIRCUIT CURRENT RATING.
* WATT-HOUR METER NOT INCLUDED IN SHORT CIRCUIT RATING.

ABB Inc., Gregson Drive
Cary, NC U.S.A.

SAL508@
Country of Origin:
Mexico
10084267P32WLA REV A

INSTRUCTION SHEET
1TQC183000Z2401

