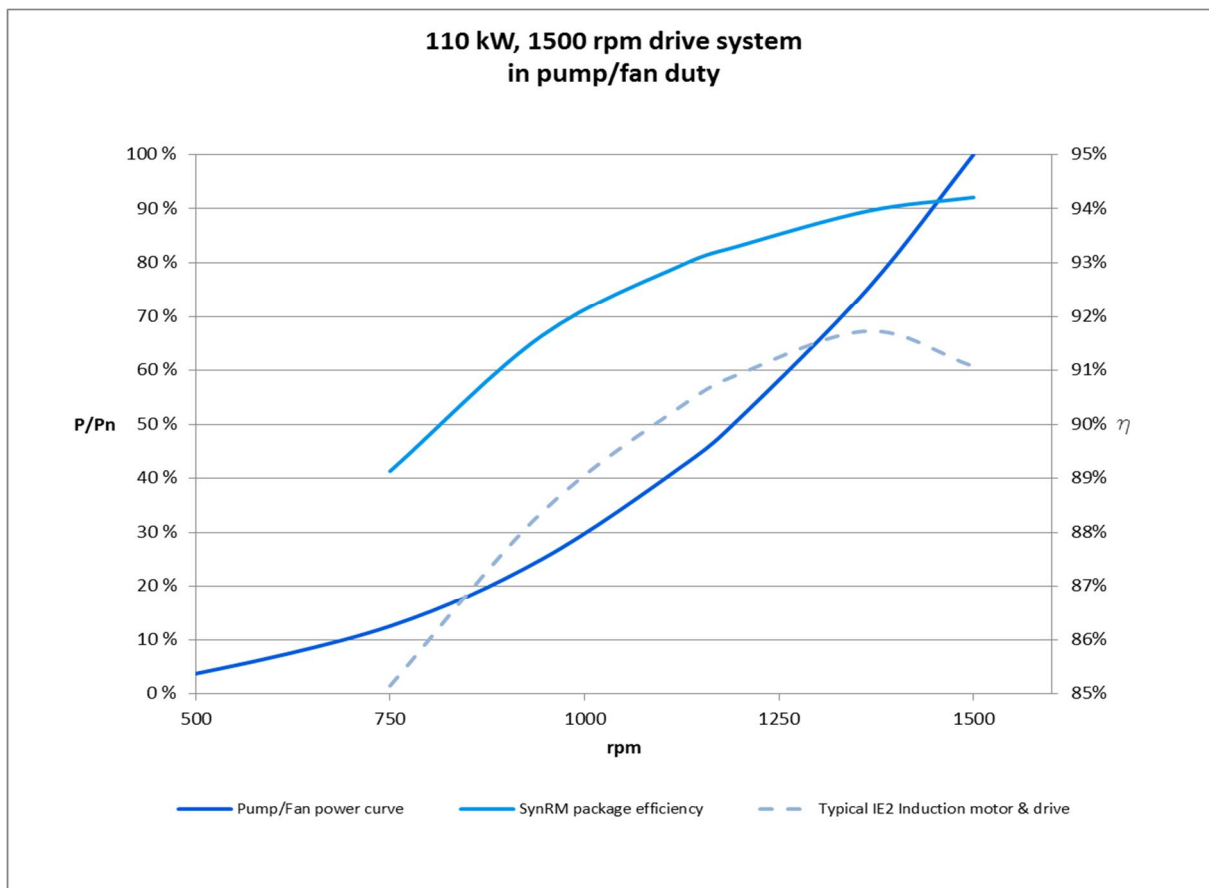


# Manufacturer's statement

## ACS880-04 and IE4 SynRM motor package efficiency

**Drive:** ACS880-01-245A-3

**Motor:** M3BL 315SMA, 3GBL312213-ADC, P<sub>n</sub> 110 kW, 1500 rpm

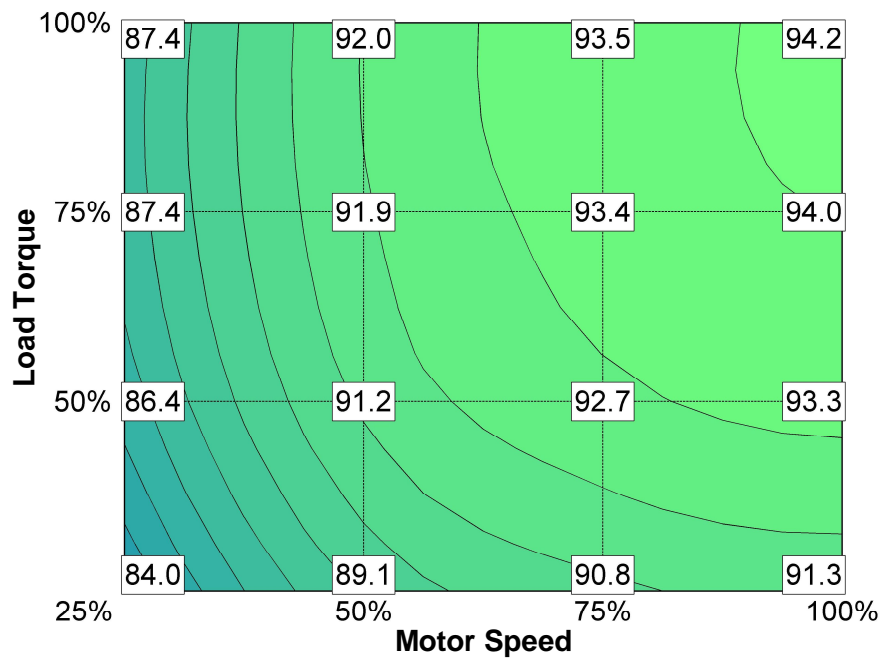


Speed	Speed rpm	P/P <sub>n</sub>	Package efficiency
50 %**	750	13 %**	89.1 %
63 %	945	25 %	91.6 %
75 %	1125	42 %	93.0 %
80 %	1200	51 %	93.3 %
91 %	1365	75 %	94.0 %
100 %**	1500	100 %**	94.2 %*

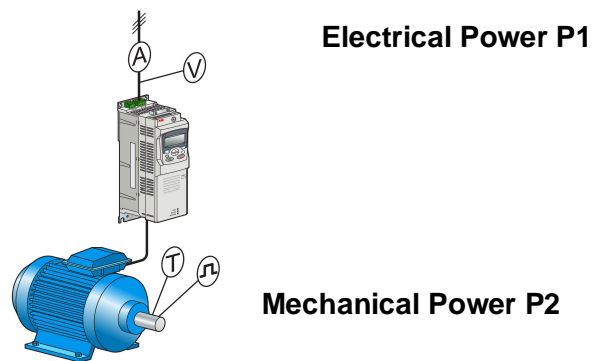
\*Estimated tolerance according to IEC 60034-1:  
 ≤150kW: 0.15 x (100 - package efficiency (%)) at the nominal point  
 >150kW: 0.10 x (100 - package efficiency (%)) at the nominal point

\*\*Measurement points according to EN 50598-2

Package efficiency [%] for applications with other load characteristics:



**Points of measurement**



**Efficiency  $\eta = P2/P1$**

Efficiency measurements were made at:

X	ABB verification laboratory, Vaasa		ABB verification laboratory, Västerås
	ABB verification laboratory, Helsinki		