

# Power plant sampling and analytical systems

## Analytical systems for power plant



ABB-supplied power plant sampling and analytical systems

**Measurement made easy**

### Introduction

This publication contains a list of Power Plant Sampling and Analytical Systems supplied by ABB Limited for World-Wide Projects. All of the systems listed have been supplied complete with ABB Analytical Instrumentation and date from 1990 onwards. ABB Limited has been involved in the design and supply of sampling systems dating back to the mid 1970's.

## Analytical systems for power plant

<b>Argentina</b>			
El Bracho	267 MW		
<b>Australia</b>			
Pelican Point	480 MW		
Swanbank	400 MW		
Cockburn Co Gen system	240 MW		
<b>Bahrain</b>			
Alba Co-Gen system	2 x 350 MW		
Al Hidd Co-Gen System	630 MW		
Alba 2 Co-Gen System	760 MW		
<b>Brazil</b>			
TermoRio Co Generation	3 x 330 MW		
TermoBahia Co Generation	330 MW		
TKS CSA	490KW		
<b>Bulgaria</b>			
Maritza East Power Station	1 x 600 MW		
<b>Canada</b>			
Island Co-Generation	254 MW		
Bayside	280 MW		
<b>Czech Republic</b>			
Dukovany NPP	1760 MW		
<b>China</b>			
Shajiao Coal-Fired Power Station	3 x 660 MW		
Foshan Co-Gen System	268 MW		
Shunde Co-Gen System	268 MW		
<b>Dubai</b>			
Condor Co-Gen System	—		
<b>Egypt</b>			
Ayoun Moussa	—		
<b>Greece</b>			
Chania Co-Gen System	133 MW		
Lavrion Co-Gen System	550 MW		
<b>Hungary</b>			
Gargarin Power Station	—		
<b>India</b>			
Godavari Power Station	208 MW		
<b>Indonesia</b>			
Belawan Extension	400 MW		
Belawan 2	430 MW		
Tanyung Priok Co-Gen System	1180 MW		
Muara Tawar Co-Gen System	650 MW		
Senkang Co-Gen System	135 MW		
Muara Tawar 5 Co-Gen System	—		
<b>Ireland</b>			
Ringsend Co-Gen System	—		
Aghada CCGT (Automated system)	430 MW		
<b>Israel</b>			
Orot Rabin 7	630 MW		
Orot Rabin 8	—		
Tzafit Co-Gen	2 x 417 MW		
<b>Italy</b>			
Gissi Co-Gen System	2 x 400 MW		
Modugno Co-Gen System	1 x 800 MW		
<b>Korea</b>			
Anyang Co-Gen System	480 MW		
Bundang Co-Gen System	600 MW		
<b>Kuwait</b>			
Az Zour	392 MW		
<b>Malaysia</b>			
Connaught Bridge	—		
Kuala Langat Co-Gen System	667 MW		
Lumut 1 & 2	2 x 652 MW		
Manjung	3 x 700 MW		
<b>Mexico</b>			
Refineria Antonia Dovali	—		
Monterrey I	484 MW		
Rosarito	541 MW		
Monterrey III	4 x 244 MW		
Hermosillo	250 MW		
Valle de Mexico	—		
Valle de Mexico II	615 MW		
<b>Netherlands</b>			
Lage Weide Heat and Power	250 MW		
Deimen Heat and Power	250 MW		
<b>New Zealand</b>			
Taranaki Co-Gen System	353 MW		
<b>Poland</b>			
Turow Co-Gen System	6 x 235 MW		
<b>Portugal</b>			
Pego 1	3 x 300 MW		
Pego 2	3 x 300 MW		
Tapada	3 x 100 MW		
Soporcell	—		
Solvay	—		
<b>Russia (Belarus)</b>			
Orsha Co-Gen System	—		

**Saudi Arabia**

Rabigh Co-Gen System	2 x 340 MW
Jazan	—
Senoko Repowering unit 5	360 MW

**Singapore**

Senoko Repowering unit 4	360 MW
Senoko Repowering unit 5	360 MW

**South Africa**

Arnot Power Station Units 4-6	—
-------------------------------	---

**Spain**

San Roque	2 x 400 MW
Besos	2 x 400 MW
Castejon	400 MW
Cartagena Co generation	3 x 397 MW
Malaga Co Generation	400 MW

**Sweden**

Karlstad Power Heating Plant	80 MW
------------------------------	-------

**Taiwan**

Chia Hui 2	550 MW
Formosa Heavy Industry	350 t/h
Formosa Heavy Industry	200 t/h
Hai Fu	2 x 960 MW
Tunghsiao 6	316 MW

**Thailand**

IP Co Gen	62 MW
IP Co Gen 2	62 MW
Bang Bo	2 x 370 MW
Bowin	350 MW
Kaeng Khoi 2	2 x 760 MW

**Turkey**

Can	360 MW
-----	--------

**United Arab Emirates**

Fujairah	2 x 800 MW
	1 x 400 MW

**United Kingdom**

Roosecote Power Station	225 MW
Killingholme Power Station	650 MW
Deeside Power Station	500 MW
Connah's Quay Power Station	4 x 342 MW
South Humber Bank Power Station	760 MW
South Humber Bank 2	500 MW
Derby CHP	62 MW
Enfield Energy	390 MW
Shoreham	400 MW
Shotton Paper	150 MW
Runcorn Boiler Plant	3 x 175 t/hr
Saltend Co Generation	—
Dungeness NPP	—
Langage Co Generation	847 MW
Staythorpe	4 x 375 MW
Grain	3 x 425 MW
Pembroke CCGT	5 x 433 MW

**United States**

Hopewell Co-Gen System	365 MW
Kalealoe Co-Gen System	180 MW
Agawam	270 MW
Midlothian	4 x 250 MW
Blackstone	2 x 270 MW
Hays	4 x 275 MW
Lake Road	3 x 265 MW
Milford	2 x 272 MW
Bellingham	2 x 250 MW
La Paloma	4 x 250 MW

**Vietnam**

Phu My 2.1	160 MW
Phu My 4	450 MW
Phu My 2.1 Add on Extension	162 MW

---

**ABB Limited**

**Measurement & Analytics**

Oldends Road, Stonehouse  
Gloucestershire, GL10 3TA  
UK

Tel: +44 (0)1453 826661

Fax: +44 (0)1453 829671

Email: [instrumentation@gb.abb.com](mailto:instrumentation@gb.abb.com)

**ABB Inc**

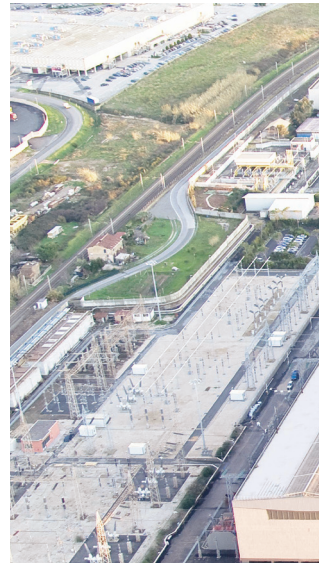
**Measurement & Analytics**

125 E County Line Road  
Warminster, PA 18974  
USA

Tel: + 1 215 674 6000

Fax: + 1 215 674 7183

[abb.com/measurement](http://abb.com/measurement)



---

We reserve the right to make technical changes or modify the contents of this document without prior notice. With regard to purchase orders, the agreed particulars shall prevail. ABB does not accept any responsibility whatsoever for potential errors or possible lack of information in this document.

We reserve all rights in this document and in the subject matter and illustrations contained therein. Any reproduction, disclosure to third parties or utilization of its contents – in whole or in parts – is forbidden without prior written consent of ABB.