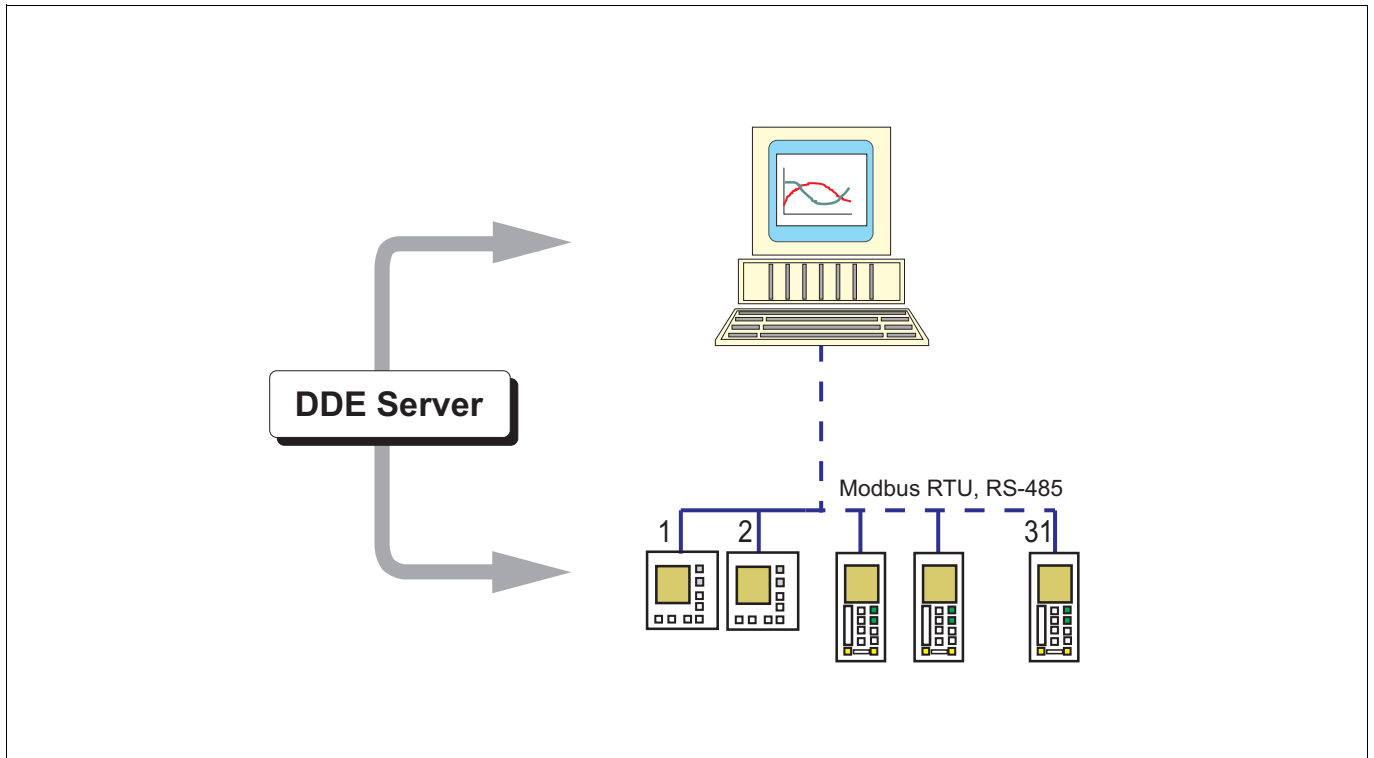


10/62-6.72 EN



DDE Server

- Dynamic Data Exchange is a standard protocol for MS Windows. DDE-capable programs are, among others, all MS Office programs and also programs like Lotus 1-2-3.
- DDE makes it possible for Windows programs to interchange data at one time or to replace them in case of program change.
- The DDE Server can read or write data from or into coupled units via the Modbus RTU port.
- The Protronic 100, Protronic 500/550 and Digitric 500 controllers can thus be integrated into application programs like MS Excel in a very easy manner. The copied data can be stored and either conditioned simultaneously or at a later date for further processing with any of Excel's various functions: e.g.:
 - Compilation of operational and batch logs with trend and/or bar-type diagrams
 - Evaluation of a series of experiments
 - Operation and observation of controllers
- Required for the transfer of data from Excel to controllers are: small programs in Visual-Basic for applications, and the programming language for Excel macros.
- The data to be read and written are contained in a "unit file". This file can be easily compiled with an ASCII text editor for every Modbus-capable unit. For Protronic and Digitric such unit files are included in the scope of supply and delivery.
- Even without an application program, the DDE Server can be used to test unit functions and to read and write values (REAL and BOOL).

Technical data

Hardware requirements

PC
 Equipped with at least 486 CPU and a minimum 8 MByte RAM.
 Recommended is a Pentium CPU with higher clock frequency
 to enable quick displays

Software requirements

Included in the scope of supply and delivery are two program
 versions:
 16-Bit version for Windows 3.1 and 3.11
 32-Bit version for Windows 95 and NT

Form and scope of delivery

3.5" compressed diskette, self-unpacking,
 containing program, on-line help and unit files for
 Protronic and Digitric, short installation manual

Program language
 German, english

Licences

Single licence
 The programs are subject to the usual copyright regulations on
 software. They may only be installed on a PC. It is not permitted to
 use the programs on PC networks. If you sell the single licence to
 a third party, please pass on the original diskette to the purchaser
 and delete the program on your installation.

Multiple licence
 A multiple licence permits the programs to be installed at several
 locations within the company and allows the programs to be used
 on PC networks.

Resale licence
 Possessors of a resale licence are allowed to sell the DDE Sever
 to third parties, together with their own applications. They must
 however oblige the customer not to use the DDE Server alone but
 only within the context of a general application. It is also not allo-
 wed to sell it to other third parties.

Ordering information		Catalog No.								
DDE Server (16bit and 32bit)		V62695A-			0	0	0	0	0	
Licence										
Modbus DDE Server,	Single licence		1							
	Multiple licence		2							
	Resale licence		3							
Language										
German			1							
English			2							

