
 TECHNICAL DATA SHEET

PMA Accessories - SGB - Tube clamp

Steel, galvanized



Applications:

- In wide range of applications in all industries

Features & Benefits:

- For the mounting of static conduits
- Elastomer profile, free from halogens
- Smooth connection to PMAFLEX corrugated conduits
- Good resistance to ozone and ageing

Materials:

- Clamp: galvanized steel
- Profile: elastomer (EPDM)
- Clamp: stainless steel (available on request)
 - V2A (SGB-xx/V2A)
 - V4A (SGB-xx/V4A)

Compatible with:

- PMAFLEX Pro Conduits
- PMAFLEX Multilayer Conduits
- PMAFLEX Conduits
- PMA Smart Line Conduits

Conforms to:

- DIN 3016

Chemical properties:

- Resistant to alcohols, acids and alkalis
- Please refer to www.pma.ch
- (Technical Information / Chemical Resistance)

Environmental properties:

- Free from halogens and cadmium
- RoHS and REACH compliant

Product selection:

Part no.	Conduit size	Dimensions in mm (nom.)					Weight	Packing unit
		d1	A	B	C	M		
	NW	d1	A	B	C	M	kg/100 pcs	pcs/PU
SGB-07	7	10.0	22.1	13.0	10.2	M4	0.4	100
SGB-07-6.4	7	10.0	32.3	19.0	16.2	M6	1.0	100
SGB-09	10	12.0	24.6	13.0	11.7	M4	0.4	100
SGB-09-6.4	10	12.0	34.3	19.0	17.2	M6	1.1	100
SGB-09-8.4	10	12.0	41.3	25.0	20.5	M8	2.0	100
SGB-11	12	15.0	27.6	13.0	13.2	M4	0.5	100
SGB-11-6.4	12	15.0	37.5	19.0	18.7	M6	1.4	100
SGB-11-8.4	12	15.0	44.3	25.0	22.0	M8	2.4	100
SGB-16	17	21.0	37.5	15.0	16.5	M5	1.0	100
SGB-16-6.4	17	21.0	43.5	19.0	21.7	M6	1.7	100
SGB-16-8.4	17	21.0	50.3	25.0	25.0	M8	2.9	100
SGB-21	23	28.0	44.9	15.0	22.0	M5	1.2	50
SGB-21-6.4	23	28.0	50.5	19.0	25.2	M6	2.0	50
SGB-21-8.4	23	28.0	55.7	25.0	28.5	M8	3.9	50
SGB-29	29	34.0	55.9	19.0	28.2	M6	2.3	30
SGB-29-8.4	29	34.0	61.5	25.0	31.5	M8	4.3	50
SGB-36	36	41.0	63.5	19.0	31.7	M6	2.7	20
SGB-36-8.4	36	41.0	70.5	25.0	35.0	M8	5.1	20
SGB-48	48	53.0	74.9	19.0	37.7	M6	3.2	20
SGB-48-8.4	48	53.0	82.5	25.0	41.0	M8	tbd	20

For bigger sizes please see SGS product range data sheet No. 60021

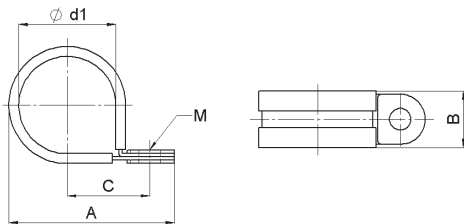
For all-polyamide products please see GL/GH product range data sheets No. 60024 / No. 60025

Our customer service dept. or local distribution partner will be pleased to help you concerning product availability and lead time

Clamp: stainless steel (available on request)

- V2A (SGB-xx/V2A)

- V4A (SGB-xx/V4A)

**Thermal properties:**

	Value:	Test parameters:	Test method:
Continuous application temperature	-50 ... +105°C		PMA DO 9.21-4510
Upper application temperature	+120°C	(20'000 h)	PMA DO 9.21-4360
Short-term	+160°C	(168 h)	PMA DO 9.21-4360

ABB Switzerland Ltd,
PMA Cable Protection
Aathalstrasse 90
8610 Uster, Switzerland
Phone: +41 58 585 00 11
pma-info@ch.abb.com
www.pma.ch

Let's write the future.
Together. **abb.com**

We reserve the right to make technical changes or modify the contents of this document without prior notice. With regard to purchase orders, the agreed particulars shall prevail. ABB Installation Products Inc. does not accept any responsibility whatsoever for potential errors or possible lack of information in this document.

We reserve all rights in this document and in the subject matter and illustrations contained therein. Any reproduction, disclosure to third parties or utilization of its contents – in whole or in parts – is forbidden without prior written consent of ABB Inc. Copyright© 2019 ABB Installation Products Inc. All rights reserved

