

We reserve all rights in this document and in the information contained therein. Reproduction, use or disclosure to third parties without express authority is strictly forbidden. © ABB 19

Pos. Läge	R connects förbinder	H connects förbinder
21	13-14	1-15
20		2-15
19		3-15
18		4-15
17A		5-15
17		6-15
16		7-15
15		8-15
14		9-15
13		10-15
12		11-15
11	12-14	13-15
11A		1-15
10		2-15
9		3-15
8		4-15
7		5-15
6		6-15
6A		7-15
5		8-15
4		9-15
3		10-15
2	11-15	
1		11-15

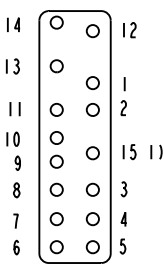
A position with letter is a through position and gives the same voltage as the normal position.

Läge med bokstav är ett genomslagsläge och ger samma spänning som normalläget.

1) Connections between the terminals 15 of the three phases are included in the star-point type.

Förbindningar mellan uttag 15 i de tre faserna ingår i nollpunktsutförandet.

Terminal board  
Plint



Section A-A  
Sektion A-A

On-load tap-changer type UZED., UZFD., 21 tap positions, coarse/fine switching.

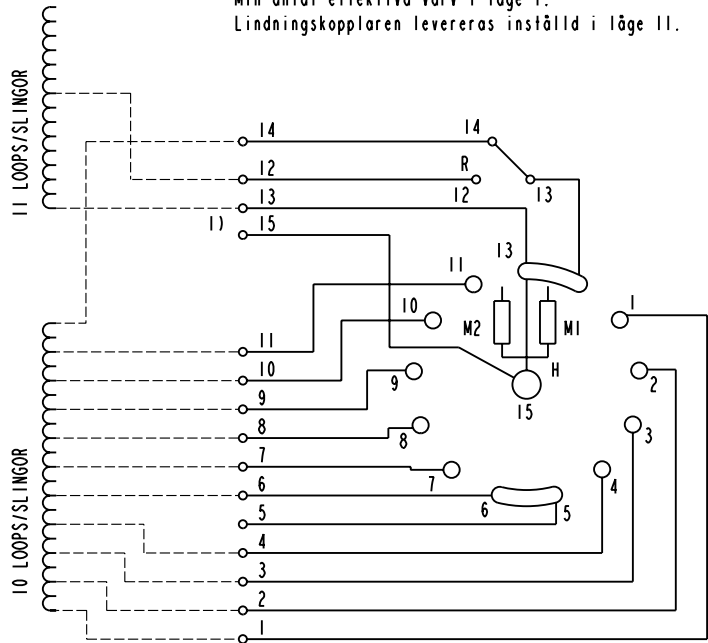
Min effective No. of turns in pos. 1.

The tap-changer is delivered set in pos. 11.

Lindningskopplare typ UZED., UZFD., 21 lägen, grov/fin-koppling.

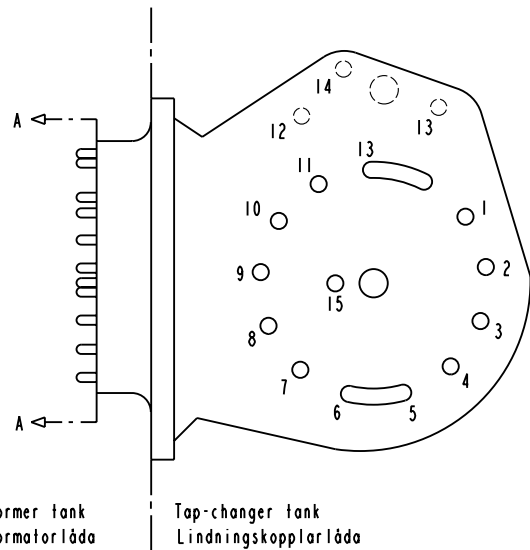
Min antal effektiva varv i läge 1.

Lindningskopplaren levereras inställd i läge 11.



The tap-changer is shown in pos. 11  
Lindningskopplaren visad i läge 11

- R Change-over selector  
Grov/fin-omkopplare
- H Main contact  
Huvudkontakt
- M1, M2 Transition contacts  
Motståndskontakter



Sheet	Cont
Year	Week
Dept	
Rev	Ind
Design checked by	Form No.

-	-	-	-	-
Rev	Ind	Revision	Appd	Year Week
Accepted by qual control		Accepted for prod by		Description (English)
R. Yngvesson				CONNECTION DIAGRAM
Design checked by		Drawn by		Description (own language)
B-O. Stenestam		L. Bergman		KOPPLINGSSHEMA
Drawing checked by		Issued by Dept		Year Week
M. Hedlund		COM/TKO		97 33
<b>ABB</b>		Asea Brown Boveri		5492 0398-5
Lang	Sheet	Rev	Ind	Cont
	1			-
DATA ORIGINAL		File name		
		0398-5		