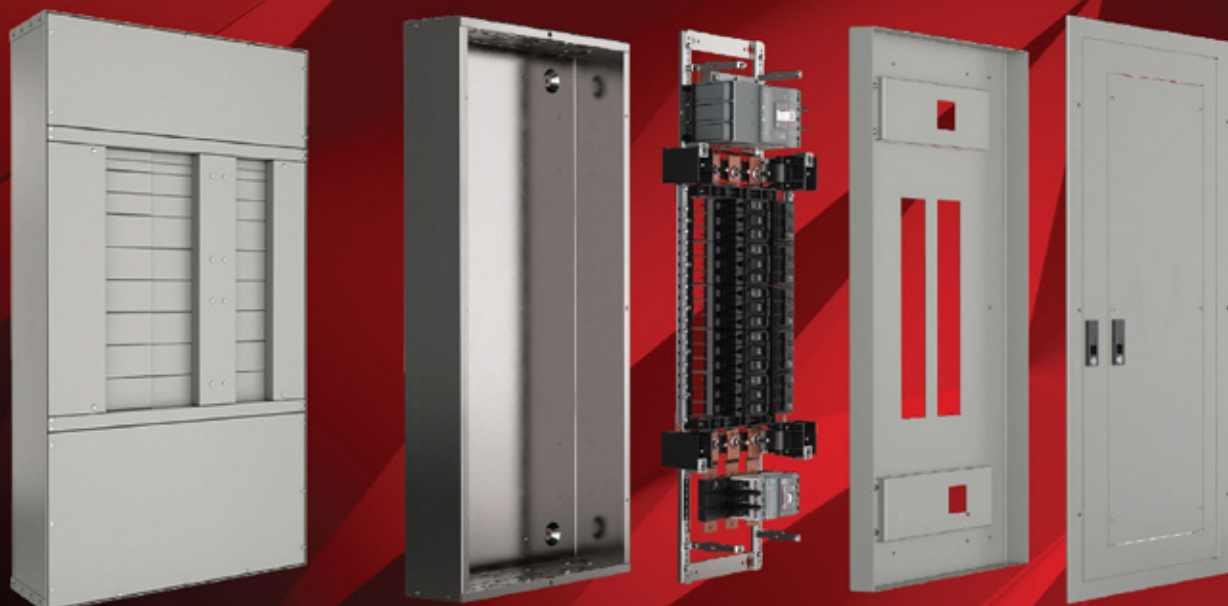


BROCHURE

ABB ReliaGear[®] Merchandised panelboard program

Distributor participation guide



- Product offering
- Distributor and customer benefits
- Eligibility and program requirements

ReliaGear® Merchandised panelboard offers

Arm your customers with the simple, versatile lighting and power panelboards they need for projects with quick turn-around.

—
01 ReliaGear lighting panelboard
—
02 ReliaGear neXT SuperBox power panelboard

ReliaGear Merchandised lighting panelboards

ReliaGear lighting panelboards come unassembled, providing the flexibility to select the appropriate interior, box, front, main and sub-feed breaker kit (if required) to meet most application requirements from stock.

Lighting panelboard characteristics

- Voltage: 208Y/120 V AC 3-phase, 480Y/277 V AC 3-phase, 240 V AC 1-phase
- Number of circuits: 30, 42
- Panelboard ampacity: 225 A, 400 A, 600 A
- Enclosure ratings: NEMA 1, NEMA 3R
- Main type: Breaker, lugs
- Max. breaking capacity: 65 kAIC
- Bus bars: 1000 A psi copper
- Lugs: Feed-thru lugs
- Main/sub-feed circuit breakers: THQB, Formula A2, Tmax® XT1, XT4, XT5
- Branch circuit breakers: THQB, THHQB, TEY, TEYF



—
01

ReliaGear Merchandised neXT SuperBox power panelboards

ReliaGear neXT SuperBox power panelboards are a preconfigured combination of interior, box, ground, neutral, front and fillers. The only additional components required are ReliaGear neXT circuit breakers.

neXT SuperBox power panelboard characteristics

- Voltage: Up to 600 V AC 3-phase
- X-space: 16X, 24X, 30X
- Panelboard ampacity: 600 A, 800 A, 1200 A
- Enclosure ratings: NEMA 1, NEMA 3R
- Main type: Breaker, lugs
- Max. breaking capacity: Up to 200 kAIC at 240 V AC, 200 kAIC at 480 V AC and 65 kAIC at 600 V AC
- Bus bars: Silver-plated heat-rated copper
- Main circuit breakers: ReliaGear neXT Tmax® XT5, XT6, XT7
- Branch circuit breakers: ReliaGear neXT Tmax XT1, XT2, XT4, XT5, XT6, XT7, Record Plus FB, TEY, Formula A2



—
02

The ABB ReliaGear® Merchandised panelboard program allows participating stocking distributors to inventory ABB lighting and power panelboards with abbreviated SKUs.



Advantages for all

The ABB ReliaGear® Merchandised panelboard program benefits authorized distributor partners as well as their valued customers.



Distributor benefits

- Reduced inventory-carrying costs enables you to stock more product, creating more sales opportunities for quick-turn projects
- Simplified offering for easier selection
- Flexible and versatile inventory, allowing you to meet a wider range of contractor applications



Contractor benefits

- Stocked inventory at participating local distributor branch of unassembled, ready-to-go panelboards suitable for most applications
- A readily available and flexible solution for projects with quick turnaround time
- Quick, confident, and efficient install

Eligibility and participation requirements



All ABB authorized distributors are eligible to request participation in the ReliaGear® Merchandised panelboard program. Simply contact your local ABB sales representative, who will then handle the request to participate on your behalf.

1 Product offering

- All participants have the option to stock either ReliaGear lighting panelboards and/or ReliaGear neXT SuperBox power panelboards
- All participants are expected to stock ABB low-voltage dry-type transformers
- All participants are expected to stock ABB Spec-Setter safety switches

2 Inventory requirements

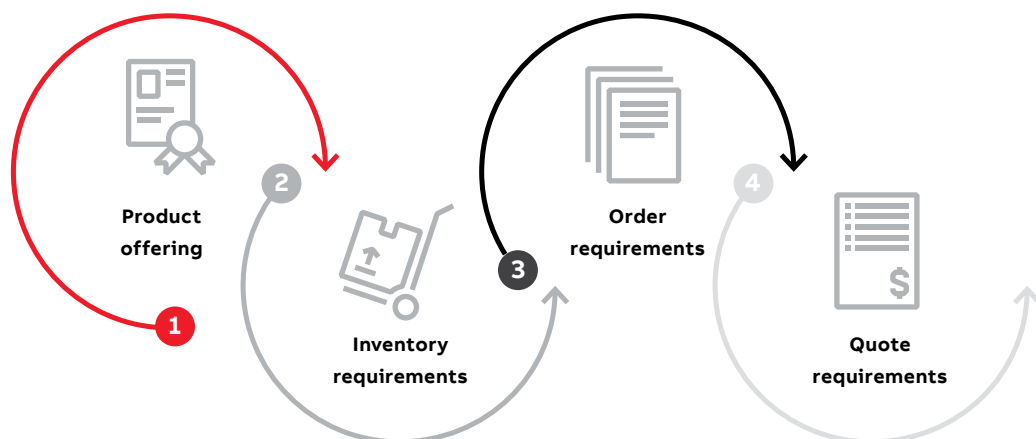
- Each participating distributor location must stock an equivalent of one (1) month's merchandised panelboards average sales volume in local inventory.
- For lighting panelboards, you are encouraged to stock a variety of boxes, fronts, breaker kits and lug kits to make your interior inventory the most flexible to respond to your local market.

3 Order requirements

- A minimum monthly order rate of lighting panelboard interiors and neXT SuperBox power panelboards is required for each location to remain in good standing with the program. Please contact your local ABB sales representative for more information.

4 Quote requirements

- Distributors expected to quote ABB panelboards, ABB low-voltage dry-type transformers and ABB Spec-Setter safety switches on small projects.





—

ABB Inc.

305 Gregson Drive
Cary, NC 27511

electrification.us.abb.com

ReliaGear Merchandised Panelboards Selection Guide

—

We reserve the right to make technical changes or modify the contents of this document without prior notice. With regard to purchase orders, the agreed particulars shall prevail. ABB Inc. does not accept any responsibility whatsoever for potential errors or possible lack of information in this document.

We reserve all rights in this document and in the subject matter and illustrations contained therein. Any reproduction, disclosure to third parties or utilization of its contents – in whole or in parts – is forbidden without prior written consent of ABB Inc. Copyright© 2024 ABB
All rights reserved