

INSTRUCTION SHEET

# A3S oil-tight illuminated selector switch

**⚠ WARNING**

**Hazardous voltage. Can cause death, serious personal injury or property damage.**

To avoid electrical shock, turn off electrical power to controls before performing installation or maintenance.

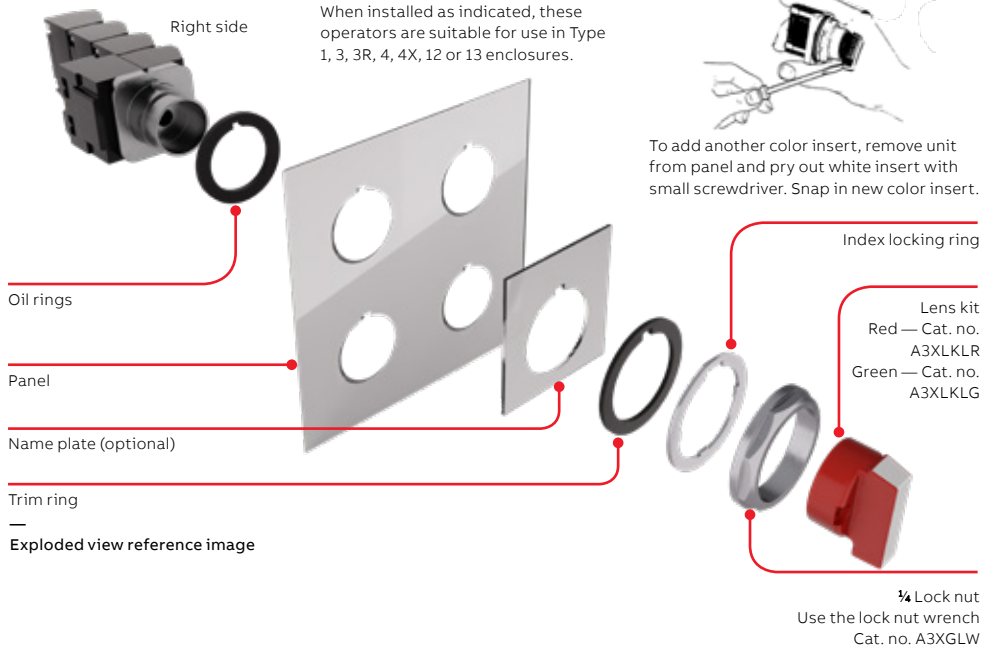
For replacement parts information or an application guide, visit our website at [abb.com/low-voltage](http://abb.com/low-voltage) or contact your ABB representative.

For more information on optional mounting kits, name plates and other accessories, visit [abb.com/low-voltage](http://abb.com/low-voltage).



These instructions do not purport to cover all details or variations in equipment nor to provide for every possible contingency to be met in connection with installation, operation or maintenance. Should further information be desired or should particular problems arise that are not covered sufficiently for the purchaser's purpose, the matter should be referred to ABB Inc.

The contents of this instruction manual shall not become part of or modify any prior or existing agreement, commitment or relationship. The sales contract contains the entire obligation of ABB. The warranty contained in the contract between the parties is the sole warranty of ABB. Any statements contained herein do not create new warranties or modify the existing warranty.

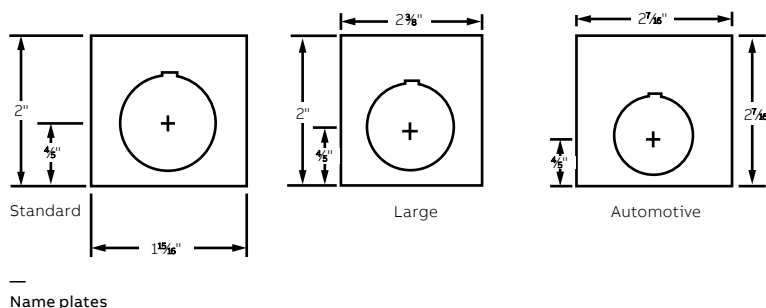


**Selector contact and CAM functions**

	Contact function for selector position		CAM	Location	Contacts	Contact block Cat. no.
	Left	Right				
2 position	X		A	L	NC	A3XC01
		X		L	NO	A3XC10
3 position	X		B	R	NC	A3XC01
		X		R	NO	A3XC10
	X		C	L	NC	A3XC01
		X		L	NO	A3XC10

Legend: X Closed contacts  
 L = Left side  
 R = Right side  
 NO = Normally open  
 NC = Normally closed

Note: Contact blocks and lens kits are ordered as required.





**CAM A operation**  
Contact blocks mount on left side.  
Light module assembly mounts on right side.



**CAM B operation**  
Contact blocks mount on right side.  
Light module assembly mounts on left side.



**CAM C operation**  
Contact blocks mount on left side.  
Light module assembly mounts on right side.

Note: CAM is identified by the 5th character of cat. no.

#### Replacement bulb chart

Volts	Incandescent bulb			LED lamp – single bulb		
		Red	Green	Yellow	White	Blue
6	#755*	A3XBL6R	A3XBL6G	A3XBL6Y	A3XBL6W	A3XBL6L
24	#757	A3XBL2R	A3XBL2G	A3XBL2Y	A3XBL2W	A3XBL2L
120	N/A	A3XBL4R	A3XBL4G	A3XBL4Y	A3XBL4W	A3XBL4L

\*Also flashing lamp #267