

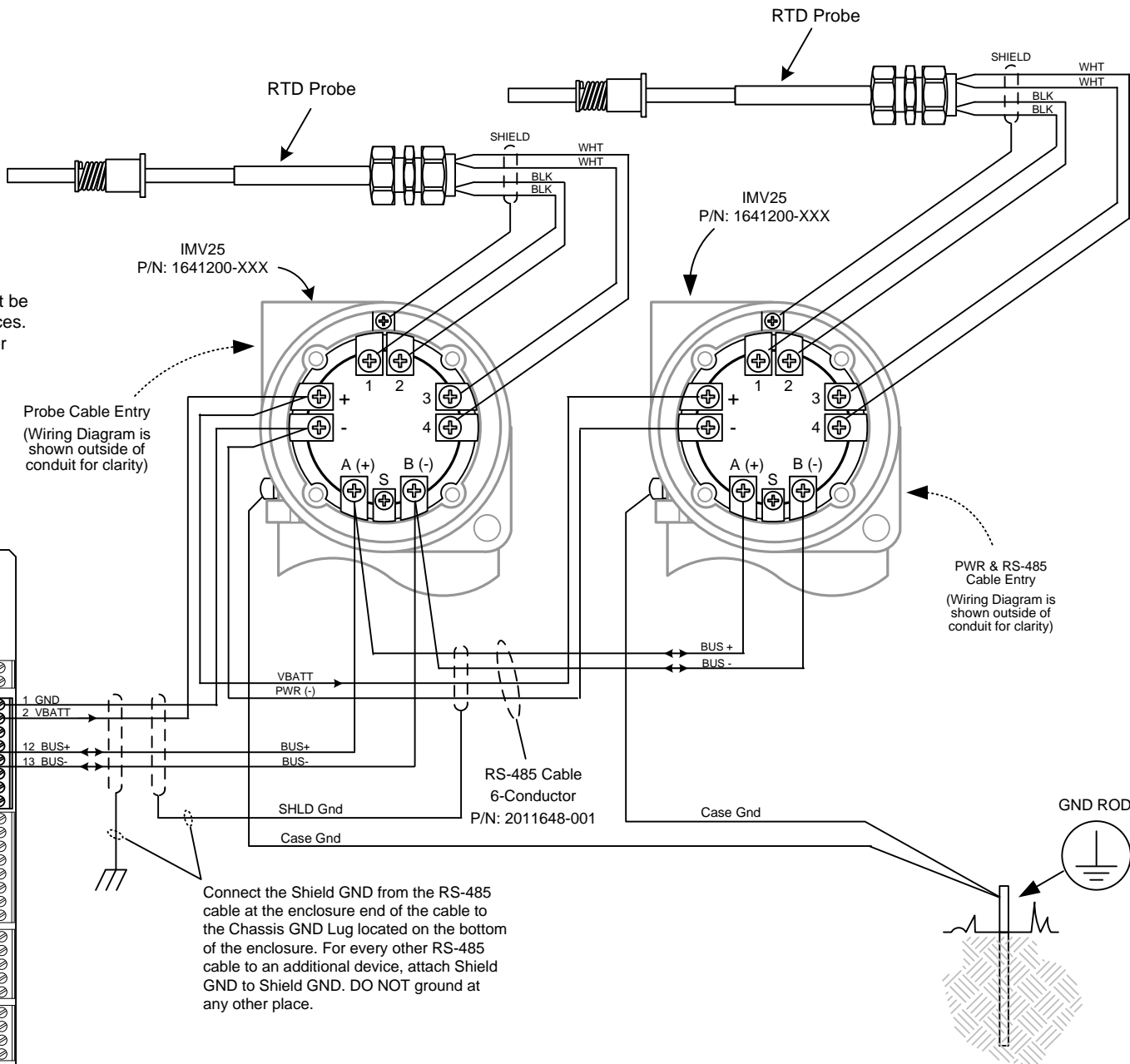
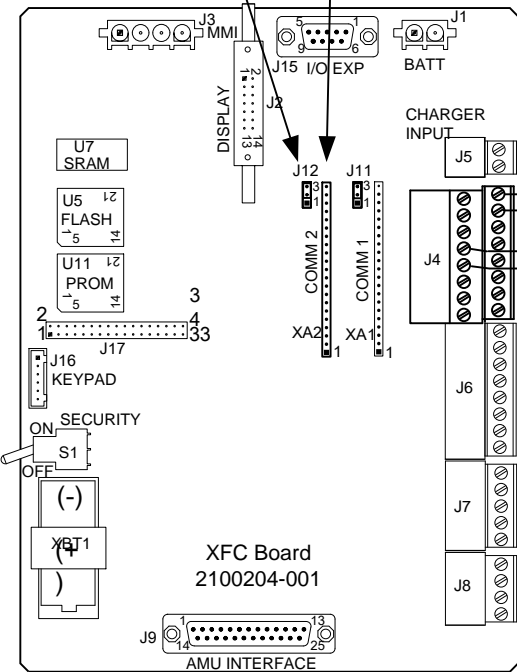
**NOTES:**

1. **WARNING:** This drawing does not illustrate the installation methods required for hazardous locations. Prior to any installation in a Classified Hazardous Location, verify installation methods by the Control Drawing referenced on the product's name tag and national and local codes.

RS-485 Communications Module  
Totalflow P/N 2015193-002/003  
In this configuration, COMM2 may not be used to communicate with other devices.  
To attach other devices, such as other flow computers, use COMM1

To terminate the Bus on the XFC Board, jumper J12 Pin-1 to Pin-2

J10



Probe Cable Entry  
(Wiring Diagram is shown outside of conduit for clarity)

PWR & RS-485 Cable Entry  
(Wiring Diagram is shown outside of conduit for clarity)

Connect the Shield GND from the RS-485 cable at the enclosure end of the cable to the Chassis GND Lug located on the bottom of the enclosure. For every other RS-485 cable to an additional device, attach Shield GND to Shield GND. DO NOT ground at any other place.

REF:N/A

<b>ABB</b> TOTALFLOW Products	ACTION	DOC TYPE	TITLE	DWG NO.	REV	SHEET
	D24201	UD	XFC (2100204 BD) COMM2 TO IMV25 MULTIVARIABLE (1641200) W/RTD PROBE	2104271	AB	1 OF 1