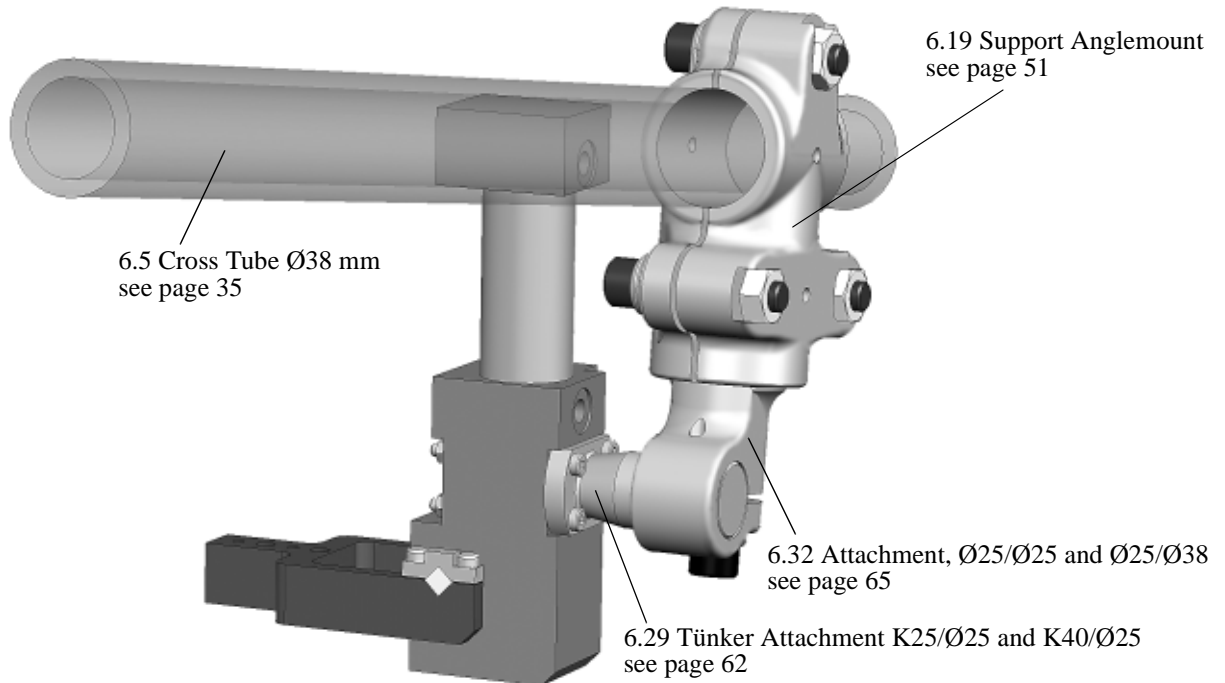
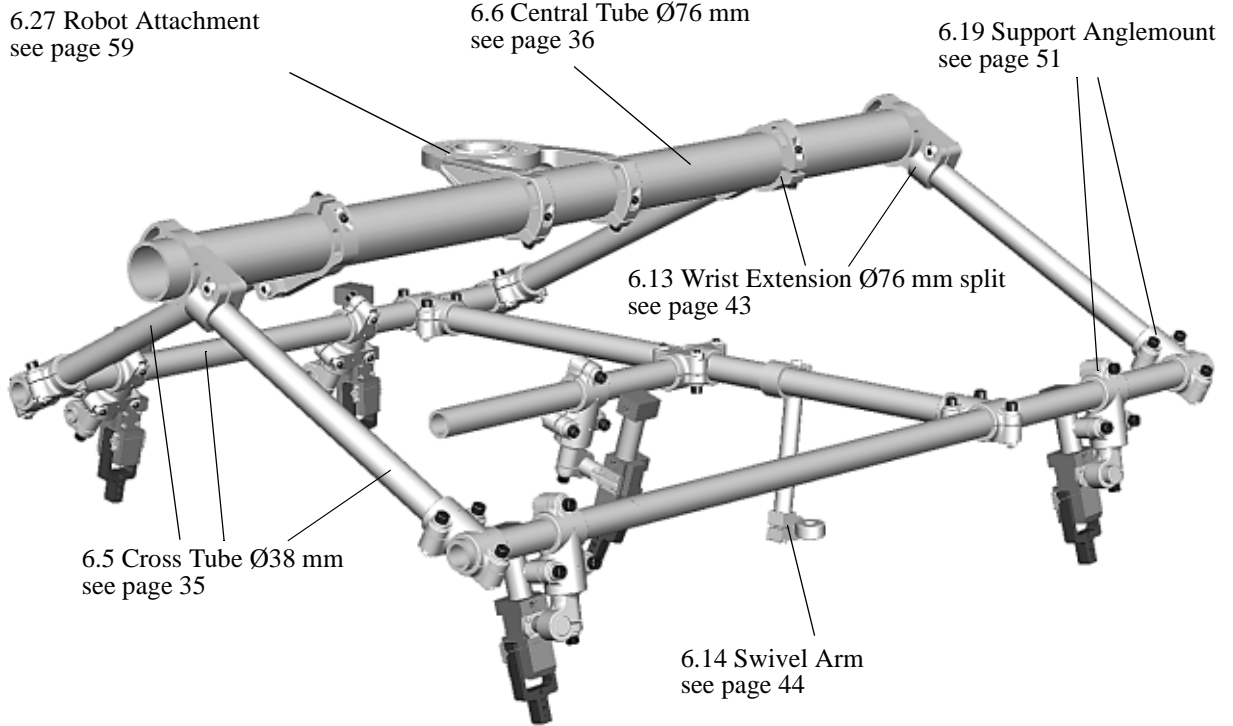


## 4.3 Robot tooling with Tünker Attachments



Filename: Kap4.fm, Mod date: 2005 04 07

## 6.17 Attachment Ø19 / Ø19

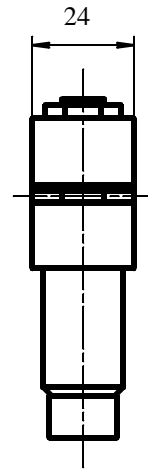
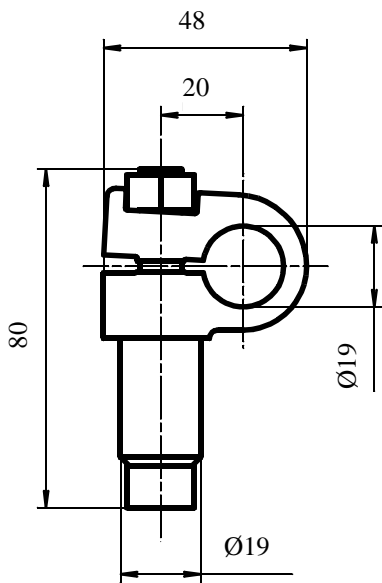
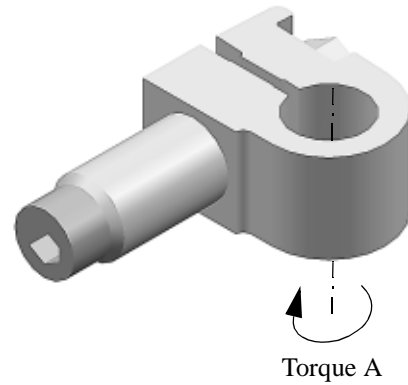
Part No. .... 9936312

Weight..... 132 g

Material .....Aluminum

Tightening Torque for M10 ..... 47 Nm

Maximum Torque A for Ø19 tube ..... 152 Nm

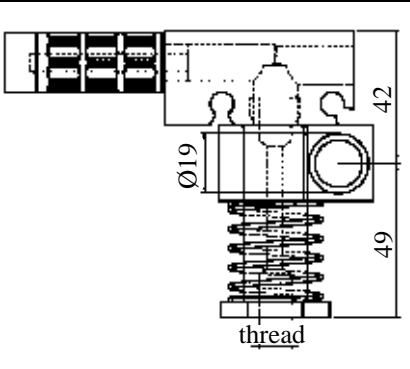
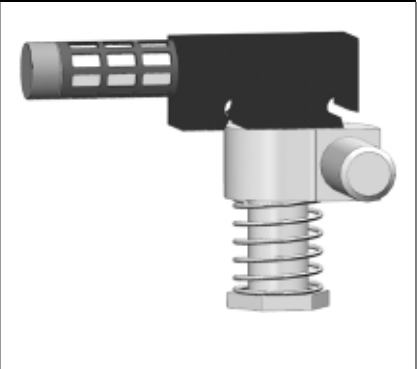


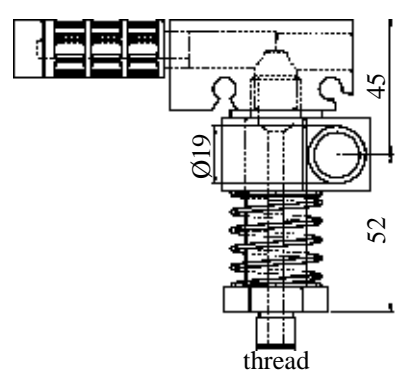
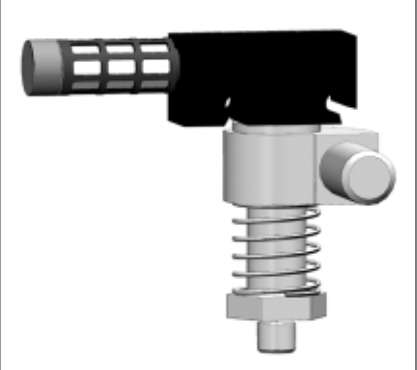
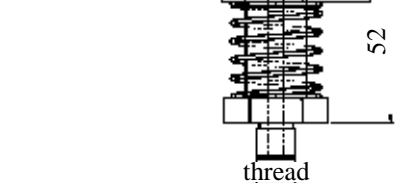
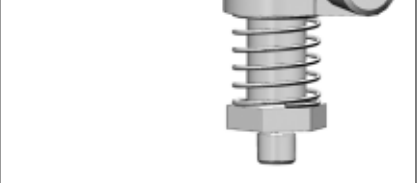
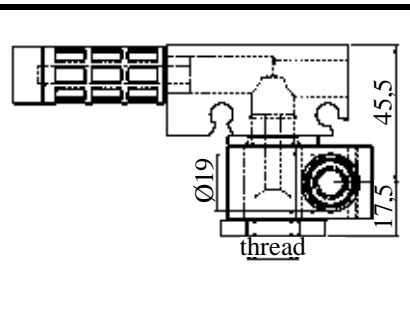
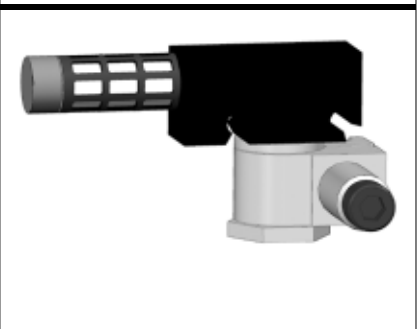


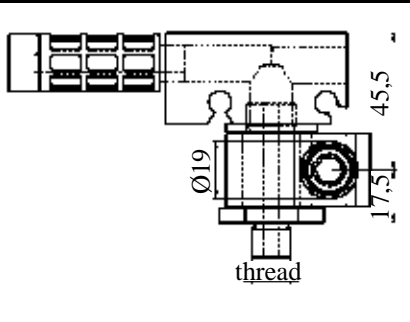
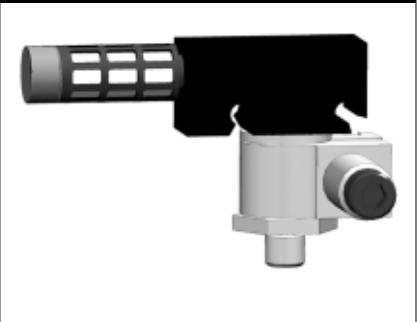




Filename: Kap6.fm, Mod date: 2005 04 07

## 6.18 Suction Cup Attachment

<p>Type: Suction Cup Attachment R 1/4" Female Thread Spring</p> <p>Part number: 91110230 Thread: R 1/4" Weight: 290 g Material: Aluminum/Steel</p>		
<p>Type: Suction Cup Attachment R 3/8" Female Thread Spring</p> <p>Part number: 91110231 Thread: R 3/8" Weight: 260 g Material: Aluminum/Steel</p>		
<p>Type: Suction Cup Attachment R 1/4" Male Thread Spring</p> <p>Part number: 91110232 Thread: R 1/4" Weight: 310 g Material: Aluminum/Steel</p>		
<p>Type: Suction Cup Attachment R 3/8" Male Thread Spring</p> <p>Part number: 91110233 Thread: R 3/8" Weight: 280 g Material: Aluminum/Steel</p>		
<p>Type: Suction Cup Attachment Female Thread</p> <p>Part number: 91110234 Thread: R 1/4" Weight: 216 g Material: Aluminum/Steel</p>		
<p>Type: Suction Cup Attachment Female Thread</p> <p>Part number: 91110235 Thread: R 3/8" Weight: 180 g Material: Aluminum/Steel</p>		
<p>Type: Suction Cup Attachment Male Thread</p> <p>Part number: 91110236 Thread: R 1/4" Weight: 210 g Material: Aluminum/Steel</p>		
<p>Type: Suction Cup Attachment Male Thread</p> <p>Part number: 91110237 Thread: R 3/8" Weight: 218 g Material: Aluminum/Steel</p>		

Filename: Kap6.fm, Mod date: 2005 04 07

<p>Type: Suction Cup Attachment R 1/4" Female Thread Spring</p> <p>Part number: 91110238</p> <p>Thread: R 1/4"</p> <p>Weight: 440 g</p> <p>Material: Aluminum/Steel</p>		
<p>Type: Suction Cup Attachment R 3/8" Female Thread Spring</p> <p>Part number: 91110239</p> <p>Thread: R 3/8"</p> <p>Weight: 420 g</p> <p>Material: Aluminum/Steel</p>		
<p>Type: Suction Cup Attachment R 1/4" Male Thread Spring</p> <p>Part number: 91110240</p> <p>Thread: R 1/4"</p> <p>Weight: 470 g</p> <p>Material: Aluminum/Steel</p>		
<p>Type: Suction Cup Attachment R 3/8" Male Thread Spring</p> <p>Part number: 91110241</p> <p>Thread: R 3/8"</p> <p>Weight: 450 g</p> <p>Material: Aluminum/Steel</p>		
<p>Type: Suction Cup Attachment R 1/4" Female Thread</p> <p>Part number: 91110242</p> <p>Thread: R 1/4"</p> <p>Weight: 265 g</p> <p>Material: Aluminum/Steel</p>		
<p>Type: Suction Cup Attachment R 3/8" Female Thread</p> <p>Part number: 91110243</p> <p>Thread: R 3/8"</p> <p>Weight: 275 g</p> <p>Material: Aluminum/Steel</p>		
<p>Type: Suction Cup Attachment R 1/4" Male Thread</p> <p>Part number: 91110244</p> <p>Thread: R 1/4"</p> <p>Weight: 285 g</p> <p>Material: Aluminum/Steel</p>		
<p>Type: Suction Cup Attachment R 3/8" Male Thread</p> <p>Part number: 91110245</p> <p>Thread: R 3/8"</p> <p>Weight: 295 g</p> <p>Material: Aluminum/Steel</p>		

## 6.21 Bayonet Attachment for Wrist Extension Ø76 mm

Part No ..... 91696092

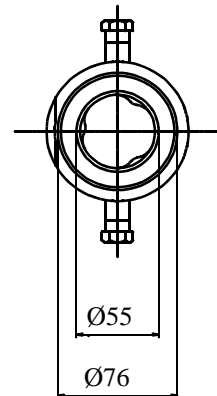
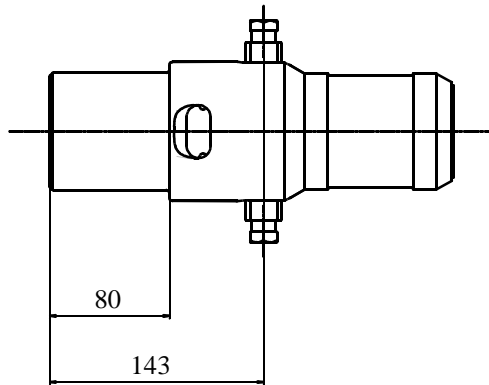
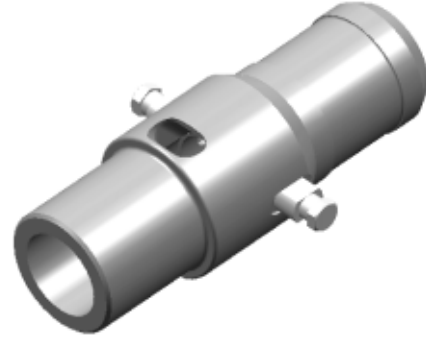
Including End Plate for Push-in Fittings, **3** holes.

Part No ..... 91110821

Including End Plate for Push-in Fittings, **6** holes.

Weight..... 2600 g

Material ..... Aluminum



### Option

End Plates and corresponding Push-in Fittings	End Plate for Push-in Fittings, <b>3</b> holes	End Plate for Push-in Fittings, <b>6</b> holes
End Plate part No. Included	9939374	9939375
Weight of End Plate	198 g	170 g
Push-in Fittings 8 mm tube. Part No. <b>Push-in Fittings NOT included.</b>	G3/8 - 8 91207662	G1/8 - 8 91204069
Push-in Fittings 10 mm tube. Part No. <b>Push-in Fittings NOT included.</b>	G3/8 - 10 91205003	-

## 6.27 Robot Attachment

<p>Type: Robot IRB 6400 Attachment Tube Ø76</p> <p>Part number: 9936313 Weight: 1408 g Material: Aluminum Torque M10: 47 Nm Max torque A for Ø76: 440 Nm</p>		
<p>Type: Robot IRB 6400 Attachment Tube Ø38</p> <p>Part number: 9936314 Weight: 1950 g Material: Aluminum Torque M10: 47 Nm Max torque A for Ø38: 76 Nm</p>		

Filename: Kap6.fm, Mod date: 2005 04 07

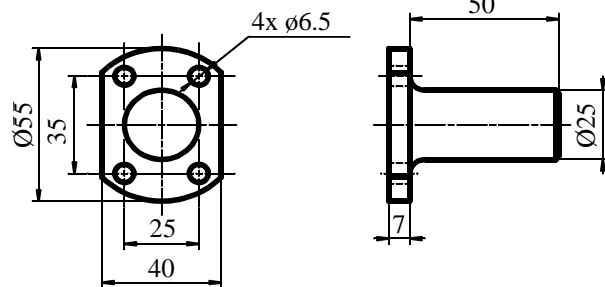
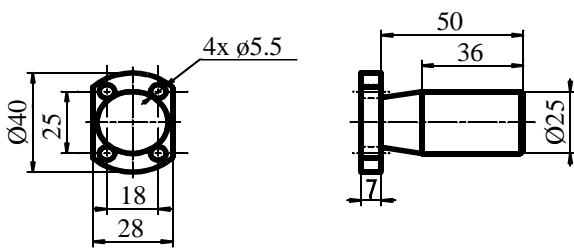
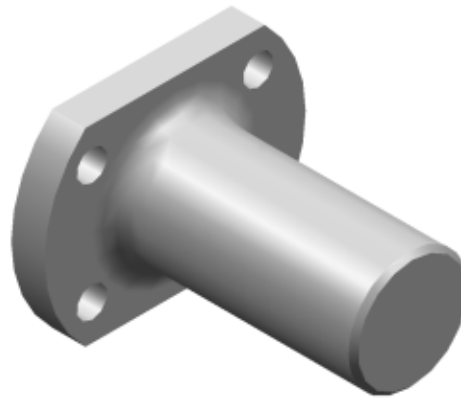
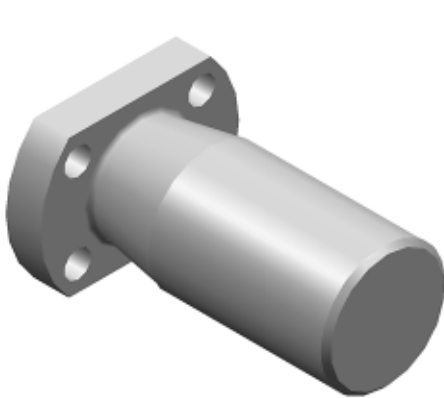
<p>Type: Robot IRB 6400 Attachment Tube Ø38</p> <p>Part number: 91110810 Weight: 1950 g Material: Aluminum Torque M10: 47 Nm Max torque A for Ø38: 76 Nm</p>	<p>Technical drawing showing front and side views of the tooling part. Dimensions include a height of 60, a central hole diameter of Ø38, a vertical distance of 250 from the top to the center of the main body, a horizontal distance of 250 between the center of the main body and the center of the side arms, and a total width of 340.</p>	<p>3D perspective view of the tooling part. Arrows labeled "Torque A" indicate the direction of force applied at the attachment points on the side arms.</p>
--	---	--

Filename: Kap6.fm, Mod date: 2005 04 07

## 6.29 Tünger Attachment K25/Ø25 and K40/Ø25

Type: ..... Tünger Attachment K25/Ø25  
 Part No. .... 39915352  
 Weight..... 30 g  
 Material ..... Aluminum  
 Tightening Torque for M5 ..... 9,8 Nm

Type:..... Tünger Attachment K40/Ø25  
 Part No..... 39915353  
 Weight ..... 105 g  
 Material ..... Aluminum  
 Tightening Torque for M10..... 9,8 Nm



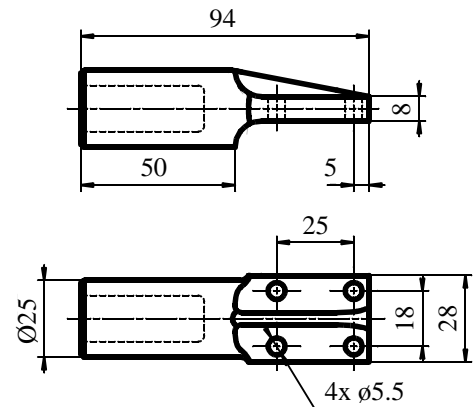
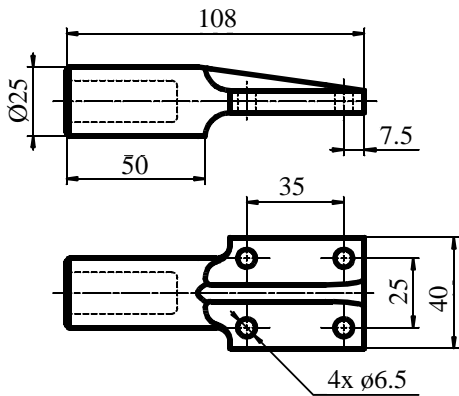
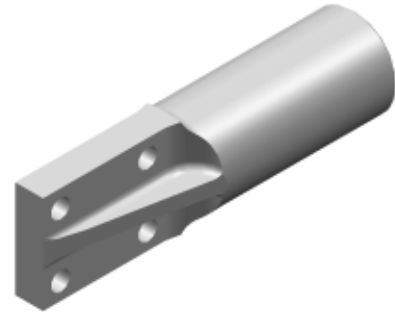
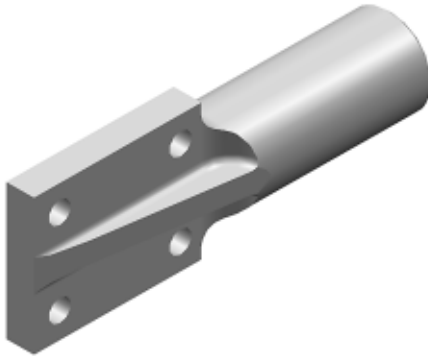
Filename: Kap6.fm, Mod date: 2005 04 07



## 6.30 Tünker Attachment K40/Ø25/90° and K25/Ø25/90°

Type: ..... Tünker Attachment K40/Ø25/90°  
 Part No. .... 39915355  
 Weight ..... 105 g  
 Material ..... Aluminum  
 Tightening Torque for M5 ..... 9,8 Nm

Type: ..... Tünker Attachment K25/Ø25/90°  
 Part No. .... 39915356  
 Weight ..... 75 g  
 Material ..... Aluminum  
 Tightening Torque for M10 ..... 9,8 Nm

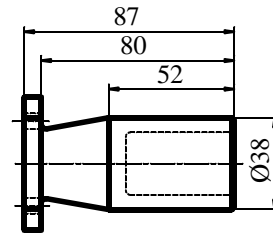
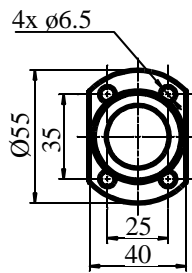
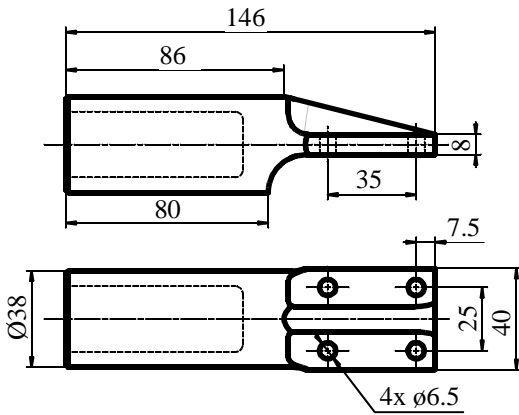
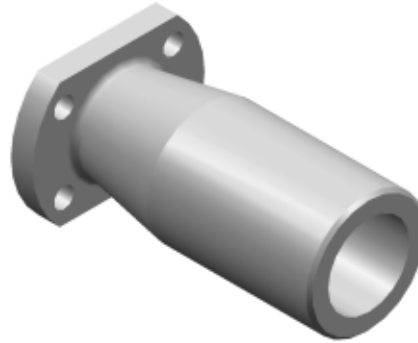


Filename: Kap6.fm, Mod date: 2005 04 07

## 6.31 Tünker Attachment K40/Ø38/90° and K40/Ø38

Type: ..... Tünker Attachment K40/Ø38/90°  
 Part No. .... 39915697  
 Weight..... 230 g  
 Material ..... Aluminum  
 Tightening Torque for M5 ..... 9,8 Nm

Type:..... Tünker Attachment K40/Ø38  
 Part No..... 39915698  
 Weight ..... 205 g  
 Material ..... Aluminum  
 Tightening Torque for M10..... 9,8 Nm

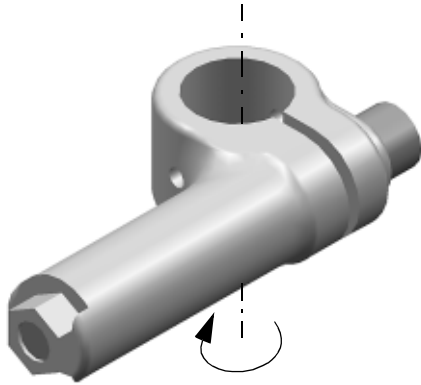


Filename: Kap6.fm, Mod date: 2005 04 07

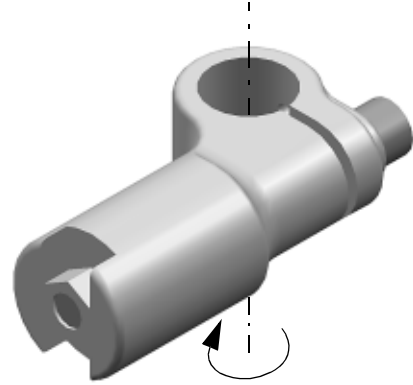
## 6.32 Attachment, Ø25/Ø25 and Ø25/Ø38

Type: ..... Attachment Ø25/Ø25  
 Part No. .... 39915706  
 Weight ..... 225 g  
 Material ..... Aluminum  
 Tightening Torque for M10 ..... 47 Nm  
 Maximum Torque A ..... 240 Nm

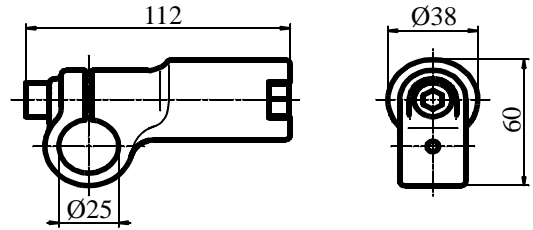
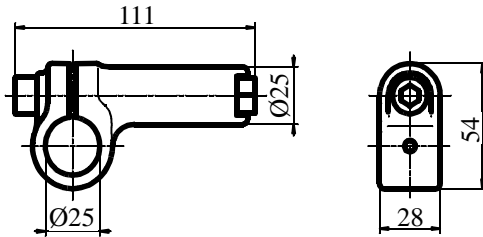
Type: ..... Attachment Ø25/Ø38  
 Part No. .... 39915708  
 Weight ..... 316 g  
 Material ..... Aluminum  
 Tightening Torque for M10 ..... 47 Nm  
 Maximum Torque A ..... 240 Nm



Torque A



Torque A



Filename: Kap6.fm, Mod date: 2005 04 07