

# MCCB Migration

## Tmax T – Ts3 to Tmax XT – XT2 and XT4

Tmax XT, the next generation of molded case circuit breakers from ABB, is now available. The Tmax XT offers increased capacities for interrupting ratings and voltages as well as application versatility with new trip units, accessory and mounting options; all in a compact and easy to use package. This guide has been created to assist with the migration of the existing Tmax T series of breakers to the new Tmax XT series. For more detailed information, please consult the Tmax XT technical catalog.

### Tmax T – Ts3



### Tmax XT – XT2 (3A to 125A)



### Tmax XT – XT4 (150A to 225A)



Ts3	Frame	XT2	XT4
225A	<b>Amperage</b>	125A	250A
2p, 3p & 4p	<b># of Poles</b>	3p & 4p	2p, 3p & 4p
80% all, 100% all	<b>Rating</b>	80% all, 100% to 100A (TM), all (Ele)	80% all, 100% all
25, 50, 85/65	<b>kA @ 480V AC</b>	25, 35, 65, 100, 150, 200	25, 35, 65, 100, 150, 200
14, 25	<b>kA @ 600V AC</b>	18, 22, 25, 35, 42	18, 22, 25, 50, 65, 100
20, 35, 50 (to 150A)	<b>kA @ 600V DC</b>	35, 50, 65, 75, 85 (500V DC)	35, 50, 65, 75, 85
TMF, MCP, MCS	<b>Trip Units</b>	TMF/TMA, MCP, MCS LS/I, LSI, LSIG, I, M-LIU	TMF/TMA, MCP, MCS, LS/I, LSI, LSIG, E-LSIG, I, M-LIU
F, P, W	<b>Versions</b>	F, P, W	F, P, W
4.13" x 4.07" x 6.7"	<b>Dimensions (3p F WxDxH)</b>	3.54" x 3.25" x 5.12"	4.13" x 3.25" x 6.3"

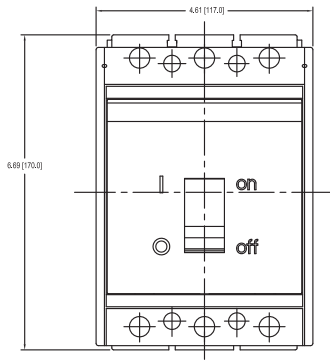
### Benefits of XT2 and XT4

- 200kA interrupting rating at 480V and advanced trip unit capabilities provide performance and reliability for the most challenging applications
- Significant size reduction for either frame size saves space in the panel while providing complete protection
- Wider range of accessories that are common across the line with push-in electrical accessory installation

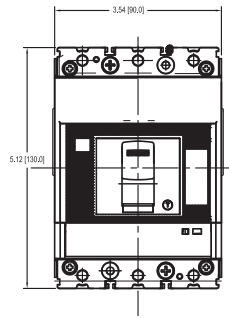
To configure and price a Tmax XT or other ABB circuit breaker, please use the online configurator tool at: [www.abb.us/lowvoltage-configurator](http://www.abb.us/lowvoltage-configurator)

# Panel mounting comparison – fixed version, 3p

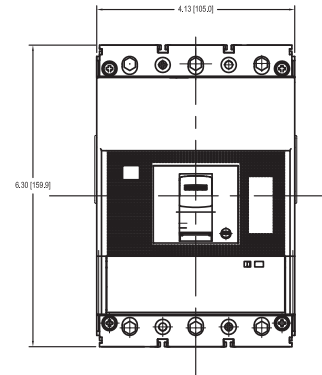
Ts3 overall dimensions



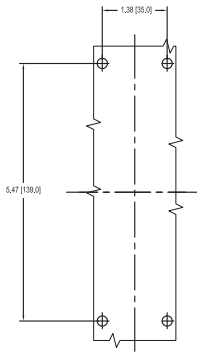
XT2 overall dimensions



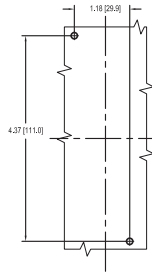
XT4 overall dimensions



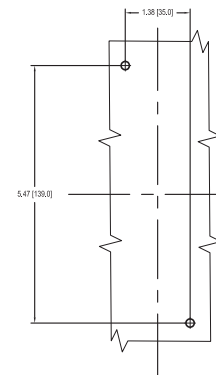
Ts3 mounting holes



XT2 mounting holes



XT4 mounting holes



## Contact us

### ABB

Low Voltage Products  
8155 T&B Boulevard  
Memphis, TN 38125  
[www.abb.com/lowvoltage](http://www.abb.com/lowvoltage)

USA Technical Support: 888-385-1221  
Customer Service: 888-862-3290  
7:00 a.m. to 5:30 p.m., CST, Monday – Friday  
[lvps.support@us.abb.com](mailto:lvps.support@us.abb.com)