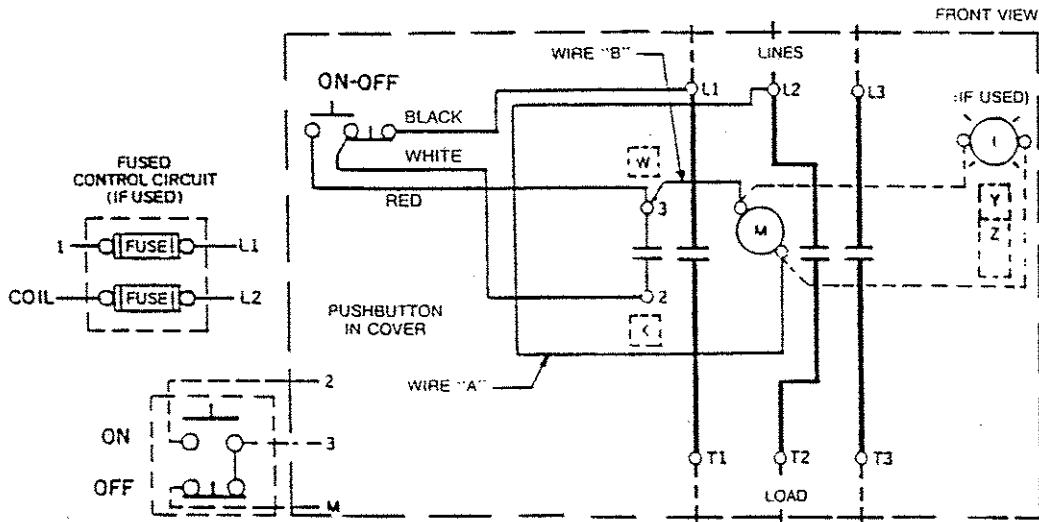


GEJ-6577 Information Label

CR360L Lighting Contactor

30 Ampere - With Push button



M-LINE CONTACTOR
I-INDICATING LIGHT

Use 75°C, copper conductors only, for field wiring. Torque line and load terminals to 20 lb-in.

FOR SEPARATE CONTROL-Remove wire "A". Disconnect black wire from L1 and connect control source to coil and black wire from pushbutton.

NOTE: Refer to the National Electrical Code. Additional control circuit overcurrent protection may be required.

FOR 1-PHASE OPERATION-Change connect of wire "A" from L2 to L3. Connect lines to L1 and L3 and load to T1 and T3.

TO ADD REMOTE CONTROL PUSHBUTTON STATION-Remove wire "B" and connect as shown.

Wire "A" has been omitted at factory on all forms having a coil voltage of 120 volts or less.

COIL (Order 15D21G plus coil suffix number per table below)

60 Hz	115- 120V	200- 208V	230- 240V	—	460- 480V	575- 600V
50 Hz	110V	—	220V	380V	440V	550V
Coil Suffix	002	023	003	064	004	005

The following accessory kits may be installed on this device.

START-STOP PB	CR305X120N
IND LIGHT	CR305X150N
AUX CONTACT	CR305X100A, B, C, D, E
CONTROL CIRCUIT FUSE	CR305X141A, B, C, D
For CSA-GND KIT	
1/2-IN CONDUIT	55-213403G001
3/4-IN CONDUIT	55-213403G002

Final Suffix Letter Of CR Number	Contact Location. See Diagram			
	W	X	†Y	†Z
A (Or None)				
B	— —			
C		— —		
D	— —	— —		
E	— —			— —
F	— —	— —		
G	— —	— —		— —
H	— —	— —		— —
J	— —		— —	— —

† Not available when Control Circuit Fuse Kit is used.

PRINCIPAL RENEWAL PARTS

4 Movable & 8 Sta Cont..... 546A301G002

