




Product brochure

# Pulley stock profile - Australia



A close-up photograph of industrial machinery, likely a conveyor system. The image shows large, dark-colored rollers mounted on a sturdy metal frame. The rollers are supported by light blue metal brackets. The background is a blurred outdoor setting with a clear blue sky and some distant vegetation. The overall scene conveys a sense of heavy industrial work.

With expertise, and a comprehensive portfolio of products and life-cycle services, we help value-minded industrial customers improve their energy efficiency and productivity.

# Pulley stock profile

## Heavy duty XT drum pulleys

### Dodge® XT conveyor pulleys

Dodge heavy duty drum and wing pulleys have been operating in the world's most demanding bulk material handling applications for over 100 years. Pulleys can be provided with high quality lagging designed to ensure maximum belt and pulley life in tough applications.

- XT hub style bushings with 9.5 degree taper angle for easy-on, easy-off
- High strength submerged arc or gas-metal arc welds
- Available as standard with vulcanized SBR lagging
- Optional lagging styles include D-Lag, ceramic or neoprene
- Custom diameters and face widths upon request

### Heavy duty XT drum pulleys with 10 mm (3/8 inch) herringbone lagging

Diameter	Hub	Face width						
		508 mm/ 20 inch	660 mm/ 26 inch	812 mm/ 32 inch	965 mm/ 38 inch	1120 mm/ 44 inch	1300 mm/ 51 inch	1600 mm/ 63 inch
152 mm/6 inch	XT25	—	229117	229118	229119	—	—	—
200 mm/8 inch	XT25	—	229452	229125	—	—	—	—
254 mm/10 inch	XT25	—	229453	229454	229361	2292046	—	—
305 mm/12 inch	XT25	229458	229459	229460	2291550	229455	—	—
	XT30	—	229407	229408	229462	229464	229465	229169
	XT35	—	—	—	—	229160	229466	229437
355 mm/14 inch	XT25	—	229445	229441	—	—	—	—
	XT30	—	229468	229469	229470	229471	—	—
	XT35	—	—	229182	229386	229472	229474	229193
406 mm/16 inch	XT25	—	229412	229387	—	—	—	—
	XT30	—	229413	229414	229416	229477	229478	—
	XT35	—	229400	229401	229402	229450	229391	229218
460 mm/18 inch	XT25	—	229366	229479	—	—	—	—
	XT30	—	229417	229418	229419	—	—	—
	XT35	—	229409	229403	229410	229482	229368	229370
	XT40	—	—	229480	229481	229234	229369	229371
510 mm/20 inch	XT30	—	—	229420	—	—	—	—
	XT35	—	—	229488	229490	—	—	—
	XT40	—	—	—	229406	229254	229491	229266
610 mm/24 inch	XT40	—	—	229421	234592	—	—	—
	XT45	—	22936	—	229399	229399	229378	229380
760 mm/30 inch	XT50	—	—	291205	—	—	—	—
915 mm/36 inch	XT50	—	—	—	291997	—	—	—

Stocked in the US

Stocked in Australia

# Pulley stock profile

## Heavy duty XT drum pulleys

Diameter	Hub	Face width								
		457 mm/ 18 inch	508 mm/ 20 inch	609 mm/ 24 inch	660 mm/ 26 inch	812 mm/ 32 inch	965 mm/ 38 inch	1120 mm/ 44 inch	1300 mm/ 51 inch	1600 mm/ 63 inch
152 mm/6 inch	XT25	231503	231504	231506	231507	231509	231511	231513	231516	—
200 mm/8 inch	XT25	231525	231528	231532	231534	231537	231543	231545	231549	—
	XT30	—	—	—	—	—	231544	—	—	—
254 mm/10 inch	XT25	—	231563	231568	231570	231575	231579	231582	231587	—
	XT30	—	—	—	231571	231576	231580	231583	231588	—
305 mm/12 inch	XT25	—	231605	—	231615	231623	231632	231641	231649	—
	XT30	—	—	—	231616	231624	231633	231642	231650	—
	XT35	—	—	—	231617	231625	231634	—	—	—
355 mm/14 inch	XT25	—	231670	—	231680	231690	231698	—	—	—
	XT30	—	—	—	231681	231691	231699	231706	231716	—
	XT35	—	—	—	231682	231692	231700	—	—	—
	XT40	—	—	—	—	—	—	—	231718	231732
406 mm/16 inch	XT25	—	—	—	231758	231771	231784	—	—	—
	XT30	—	—	—	231759	231772	231785	231797	231807	231822
	XT35	—	—	—	231760	231773	231786	231798	231808	—
460 mm/18 inch	XT25	—	—	—	231860	231875	—	—	—	—
	XT30	—	—	—	231861	231876	231892	—	231918	—
	XT35	—	—	—	231862	231877	231893	231905	231919	231939
	XT40	—	—	—	—	231878	231894	231906	231920	—
	XT45	—	—	—	—	—	231895	231907	—	—
510 mm/20 inch	XT25	—	—	—	—	231994	—	—	—	—
	XT30	—	—	—	231979	231995	232012	—	—	—
	XT35	—	—	—	231980	231996	232013	—	—	—
	XT40	—	—	—	—	231997	232014	232027	232040	—
610 mm/24 inch	XT30	—	—	—	—	232129	232145	—	—	—
	XT40	—	—	—	—	—	—	—	232179	—
	XT45	—	—	—	232118	232132	232148	232163	—	—
760 mm/30 inch	XT50	—	—	—	—	232276	—	—	—	—
915 mm/36 inch	XT50	—	—	—	—	—	291955	—	—	—

Stocked in the US  
Stocked in Australia

# Pulley stock profile

## XT wing pulleys

### Heavy duty XT wing pulleys

Diameter	Hub	Face width						
		508 mm/ 20 inch	660 mm/ 26 inch	812 mm/ 32 inch	965 mm/ 38 inch	1120 mm/ 44 inch	1300 mm/ 51 inch	1600 mm/ 63 inch
200 mm/8 inch	XT25	219593	219597	219601	219604	—	219607	—
254 mm/10 inch	XT25	209069	219072	225127	219080	219087	219092	—
	XT30	—	219073	219077	—	—	219093	—
305 mm/12 inch	XT25	219110	219116	225128	234116	219135	219144	219152
	XT30	—	219117	219123	219129	219136	219145	—
	XT35	—	—	225158	219130	—	219146	—
355 mm/14 inch	XT25	—	219175	225129	219187	—	—	—
	XT30	—	219176	219180	219188	219198	219202	219211
	XT35	—	—	—	219189	—	—	—
406 mm/16 inch	XT25	—	219233	219243	219252	—	—	—
	XT30	—	219234	219244	219253	219265	219273	—
	XT35	—	—	—	219254	219254	219274	219286
	XT40	—	—	—	—	—	219275	—
460 mm/18 inch	XT30	—	219309	219321	219333	—	219358	—
	XT35	—	—	219322	219334	—	219359	219370
	XT40	—	—	—	—	219349	—	—
	XT45	—	—	—	219336	219350	—	—
510 mm/20 inch	XT35	—	—	—	219410	—	219437	—
610 mm/24 inch	XT35	—	—	—	—	219498	—	—
	XT40	—	—	—	—	—	219510	—
760 mm/30 inch	XT40	—	—	—	—	—	219557	—

Stocked in the US

Stocked in Australia

### Mine duty XT wing pulleys

Diameter	Hub	Face width				
		660 mm/ 26 inch	812 mm/ 32 inch	965 mm/ 38 inch	1120 mm/ 44 inch	1300 mm/ 51 inch
305 mm/12 inch	XT35	219633	219636	219642	219645	—
355 mm/14 inch	XT25	—	—	—	—	219676
	XT35	219661	219664	219671	219674	—
406 mm/16 inch	XT35	219692	219699	219710	—	—
	XT40	—	219700	—	219717	219723
460 mm/18 inch	XT30	—	219748	—	—	—
	XT35	219744	219749	219759	—	—
	XT40	—	—	—	219765	219771
510 mm/20 inch	XT45	—	—	—	219818	—
	XT50	—	—	—	—	219824
610 mm/24 inch	XT35	—	—	—	219860	—
	XT50	—	—	219857	219863	—
	XT60	—	—	—	—	219870

Stocked in the US



# Pulley stock profile

## XT bushings

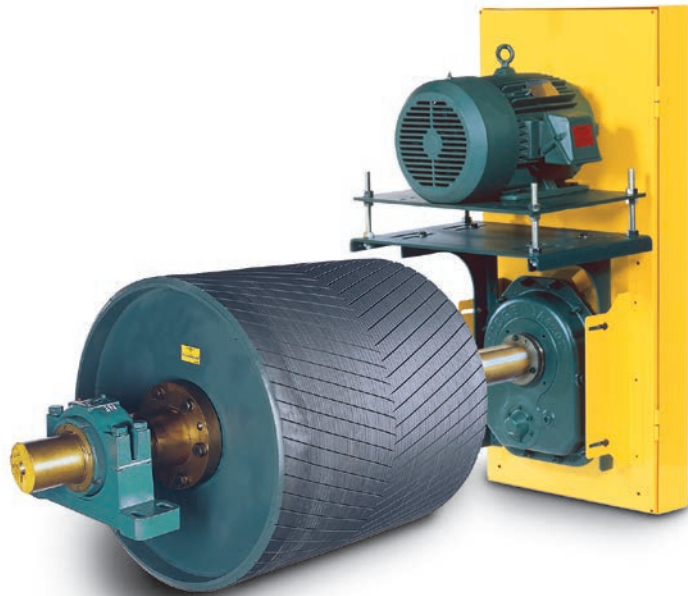
### Stock part numbers for common shaft sizes

Bushing Size	Part number	Bushing bore
XTB25	226955	40 mm
	226947	50 mm
	226956	60 mm
	226811	65 mm
XTB30	226954	40 mm
	226952	50 mm
	225702	60 mm
	226957	65 mm
	226936	70 mm
	226813	75 mm
XTB40	226944	65 mm
	226939	70 mm
	226945	75 mm
	226940	90 mm
	226814	100 mm
XTB45	226950	90 mm
	226951	100 mm
	226815	110 mm
	226959	115 mm
XTB50	226960	100 mm
	226948	115 mm
	226816	120 mm
	226949	125 mm

Additional bore sizes available on request

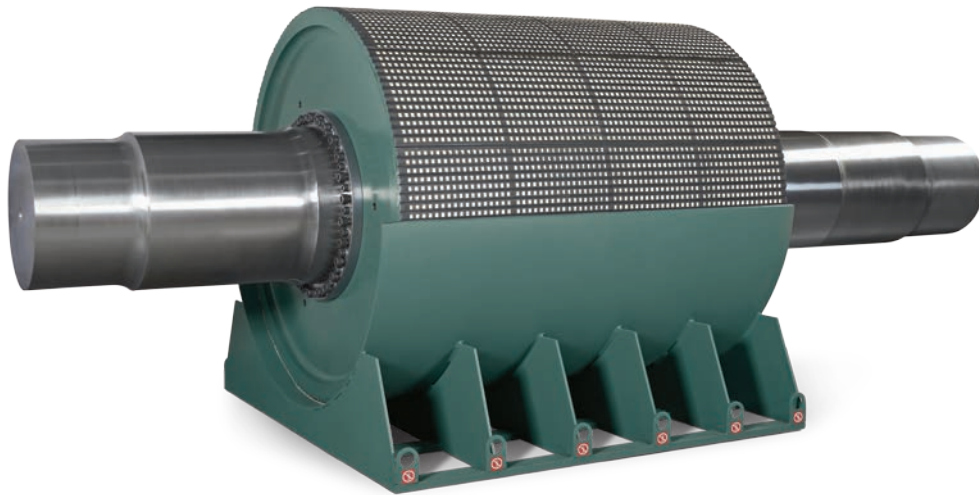
### Assembly services available

- Pulleys assembled with shaft and Dodge® ISN bearings
- Stocked components assembled in 5 to 7 days



# Pulley stock profile

## Engineered to order options



### Dodge® engineered conveyor pulleys

With dedicated pulley design engineers utilizing industry leading conveyor design software, Dodge engineered pulleys deliver the ultimate in reliable performance and economy.

### Engineered pulley features

- Integral hub, profiled, turbine, and T-section end disc designs
- Taper bushed designs up to 300 mm
- Keyless locking devices up to 750 mm
- Vulcanized lagging up to 25 mm thick in proprietary abrasion resistant D-Lag rubber, SBR, and fire and oil resistant neoprene
- Wide variety of grooving patterns
- High-traction, vulcanized or cold bonded ceramic lagging 12 mm, 16 mm, 19 mm or 25 mm thickness
- Serialized nameplates
- 2 year extended warranty



### Dedicated manufacturing

All engineered pulleys are manufactured in our facility. Our in-house capabilities allow us to manufacture some of the largest pulleys in the world, while maintaining superior quality.

- Machining up to 95 mm rim thickness and 300 mm end disc thickness
- Single piece roll up to a 750 mm diameter and 2500 mm face width
- Machined shafting up to 750 mm diameter and 6 meters long
- Vulcanized pulleys up to 1.8 meters
- Ratings up to 1400 kN/m



### Dodge D-Lag vulcanized lagging

- Proprietary vulcanized rubber compound
- Dramatically increases abrasion resistance
- Reduces lagging wear and increases life
- 100% vulcanized to the pulley
- 73% better abrasion resistance over standard SBR
- Resists cuts and gouges
- Ideal for harsh duty applications



# Contact us

[www.new.abb.com/mechanical-power-transmission](http://www.new.abb.com/mechanical-power-transmission)

We reserve the right to make technical changes or modify the contents of this document without prior notice. With regard to purchase orders, the agreed particulars shall prevail. ABB Ltd does not accept any responsibility whatsoever for potential errors or possible lack of information in this document.

We reserve the rights in this document and in the subject matter and illustrations contained herein. Any reproduction, disclosure to third parties or utilization of its contents - in whole or in part - is forbidden without prior written consent of ABB Ltd.

Copyright© 2015 ABB

All rights reserved

9AKK2017-106560 EN 2017-01

