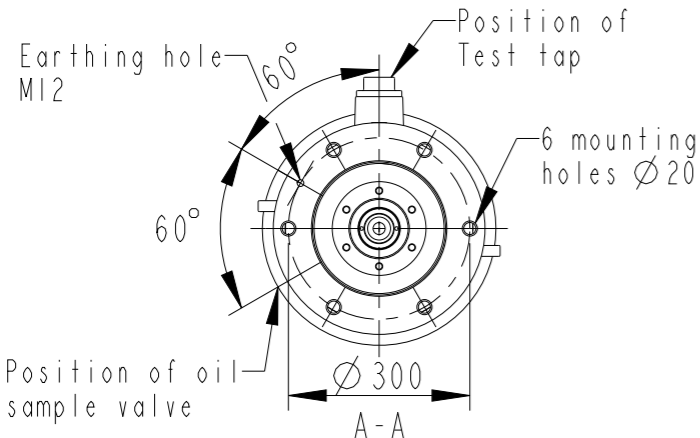
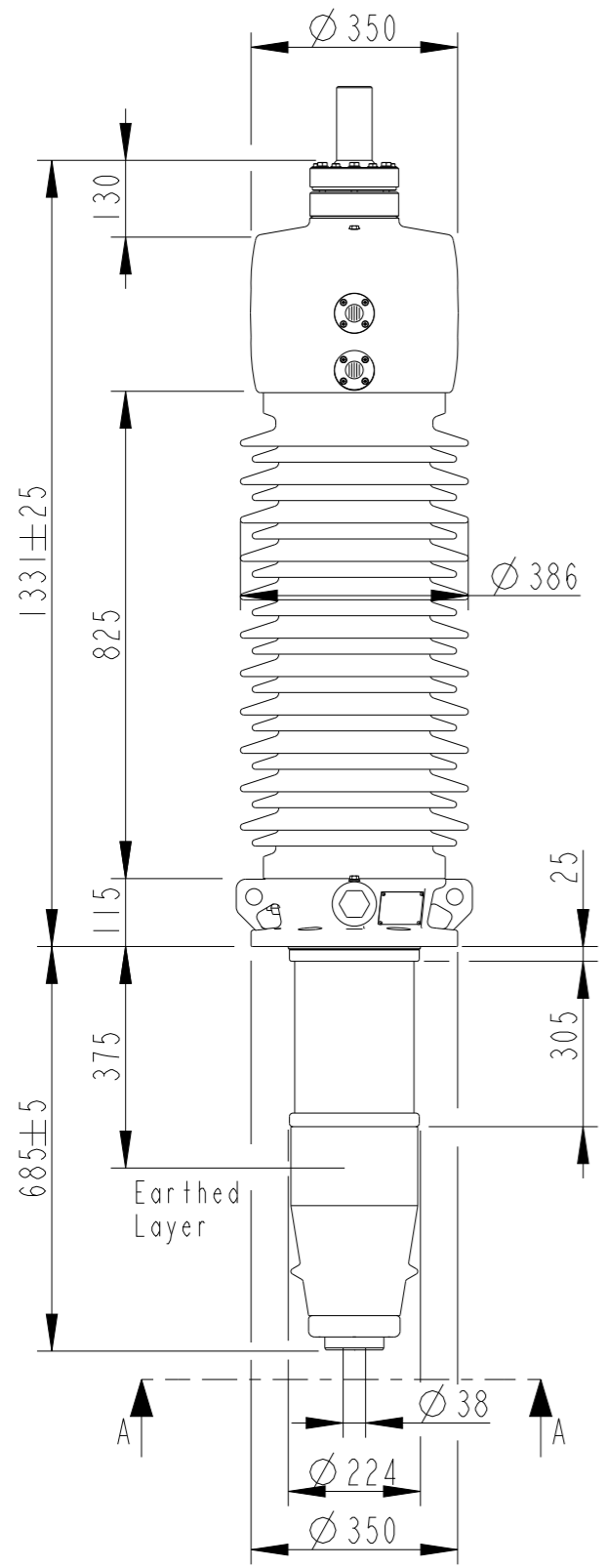


This document is issued by means of a computerized system. The digitally stored original is electronically approved. The approved document has a date entered in the 'Approved'-field. A manual signature is not required.

The information contained in this document has to be kept strictly confidential. Any unauthorized use, reproduction, distribution or disclosure to third parties are strictly forbidden. ABB reserves all rights regarding Intellectual Property Rights. © Copyright 2013 ABB. All rights reserved.



**Bushing Data:**

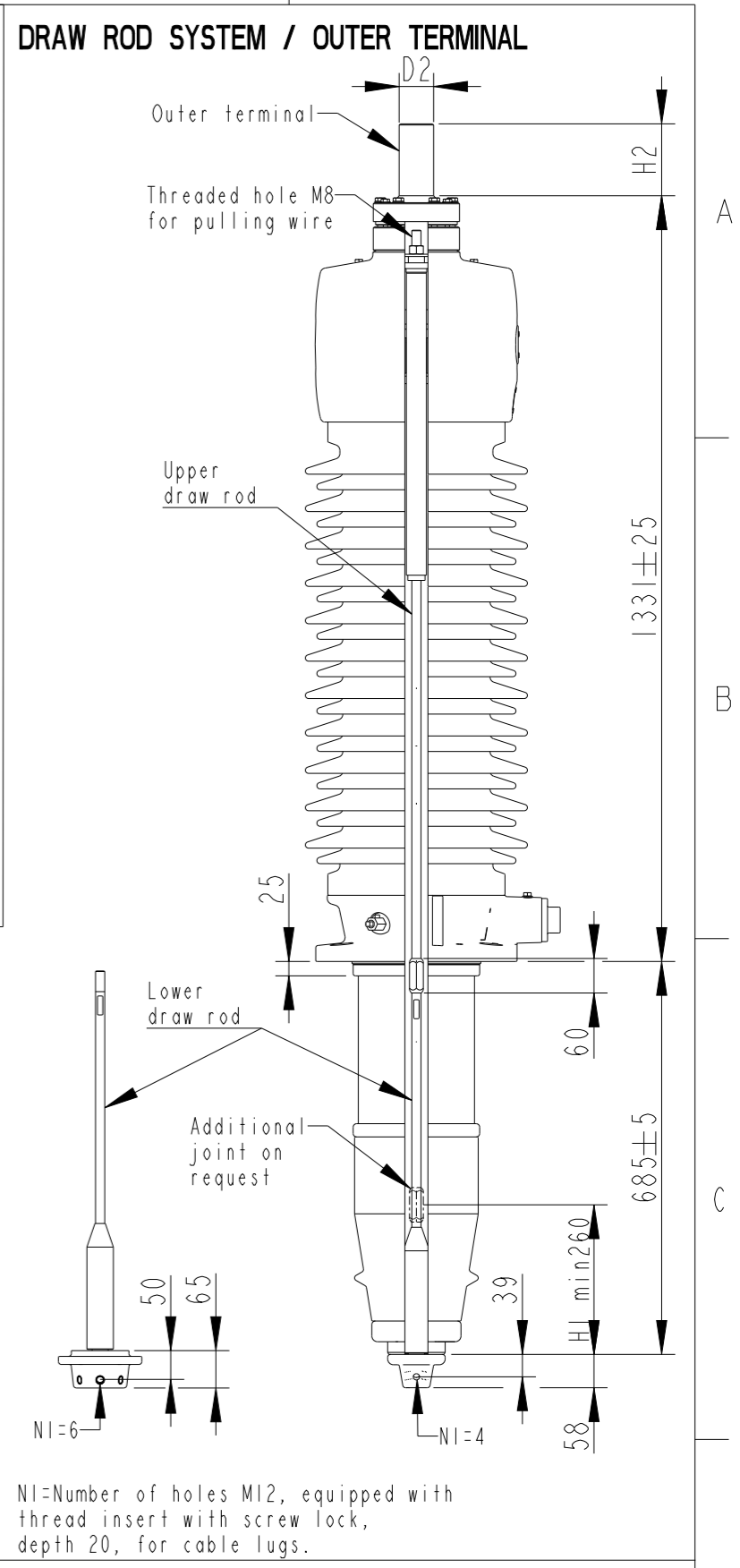
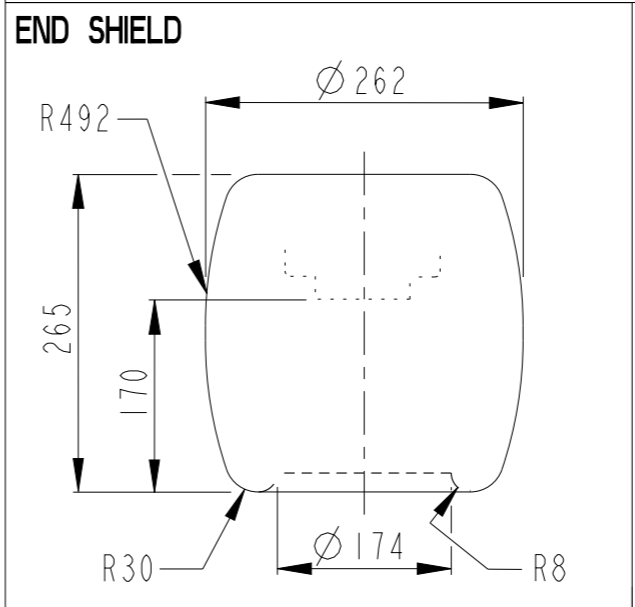
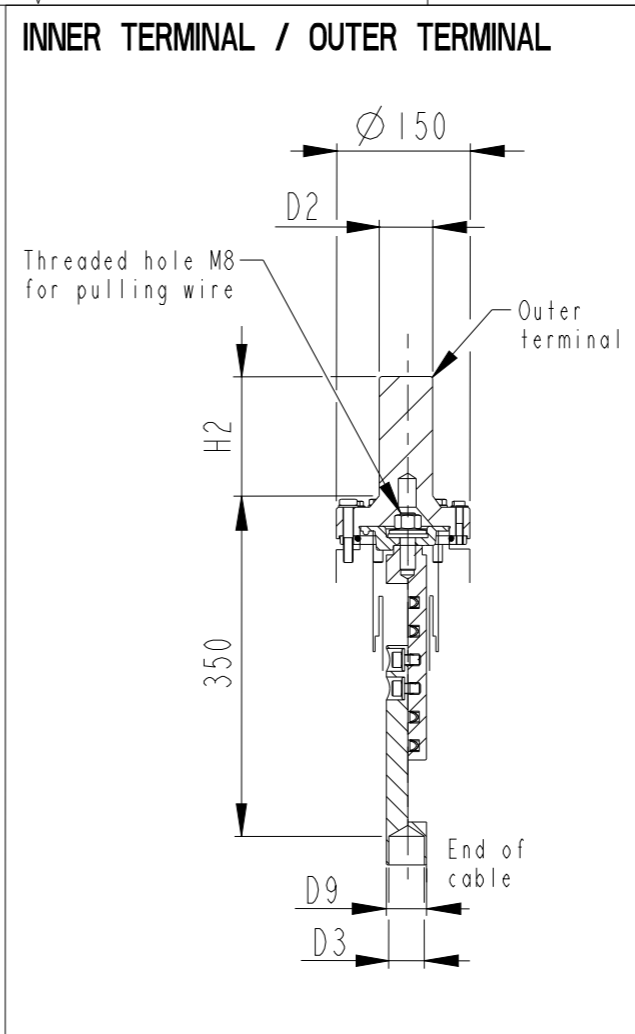
Rated Voltage	72.5 kV
Phase to-earth Voltage	42 kV
Dry Lightning Impulse 1,2/50µs	380 kV
Wet Switching Impulse	300 kV
Wet Power frequency AC	170 kV
Routine test Imin dry 50Hz	175 kV
Rated Current	5000 A
Creepage Distance	2955 mm
Mass	280 kg

**Ordering Data:**

<b>BUSHING</b>	COLOUR AIR INSULATOR			
IZSC902072-ABA	BROWN			
<b>OUTER TERMINAL</b>		Max. Rated H2	D2	
		Current (A)(mm)	(mm)	
LF170 073-A	Al	2500 125	60	
LF170 073-B	Cu	4000 125	60	
LF170 073-G	Cu/Ag	4000 125	60	
LF170 073-L	Cu/Sn	4000 125	60	
LF170 073-BA	Cu/Ag	3000 125	2"-12UN	
LF170 073-AA	Cu	5000 115	96	
LF170 073-DB	Cu/Ag	5000 125	96	
<b>END-SHIELD</b>	EPOXY INSULATED			
LF170 046-U	INSULATED WITH 3 mm PRESSBOARD			
<b>DRAW ROD SYSTEM</b>	LOWER DRAW ROD WITH NI=4 OR NI=6			
LF170 059	UPPER DRAW ROD			
<b>INNER TERMINAL</b>	D3	D9	Cond.area	Current (A)
	(mm)	(mm)(mm <sup>2</sup> )	IEC	IEEE
LF170 056-A	0 *)	35 -	-	-
LF170 056-B	15	35 95	390	370
LF170 056-C	30	35 285	1000	830

\*) WITH PILOT HOLE D=5

ABB		Ludvika, Sweden	
No.			
Um/Uy	kV Ir	A	50/60 Hz
BIL	kV SIL	kV AC	kV
M	kg L	mm	✓
C1	pF Tan δ		x
C2	pF Tan δ		x



Prepared	Kalaivanan R	2017-06-20	Responsible department	PGCO/BK	Title	
Modified by	Kalaivanan R	2017-07-03	Take over department		GOE 380-300-5000-0.3	
Approved by	Natalia Gutman	2017-07-03	Used in product		GOE 380-300-5000-0.3	Language
Revision	F	Drawing display updated				82
					Order	Sheet no.
					Document no.	2751369-303
						No. Shis.
						(1)

